

G
Gulf

C
Coast

A
Association of

G
Geological

S
Societies

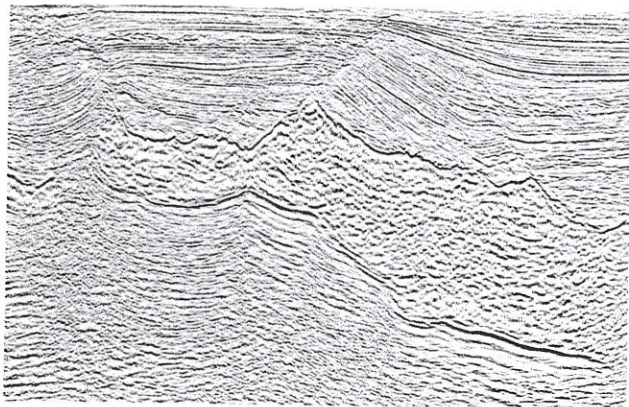
Transactions of the 47th Annual Convention

New Orleans, Louisiana • October 15-17, 1997



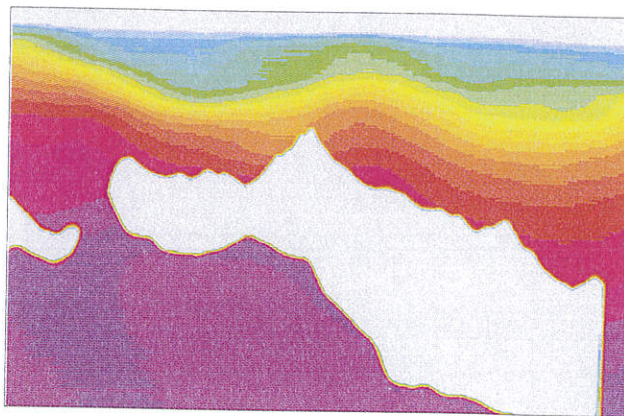
An Integrated Approach to Solve Your Exploration and Production Needs

DIAMOND GEOPHYSICAL provides the structural imaging expertise for geologically complex areas.

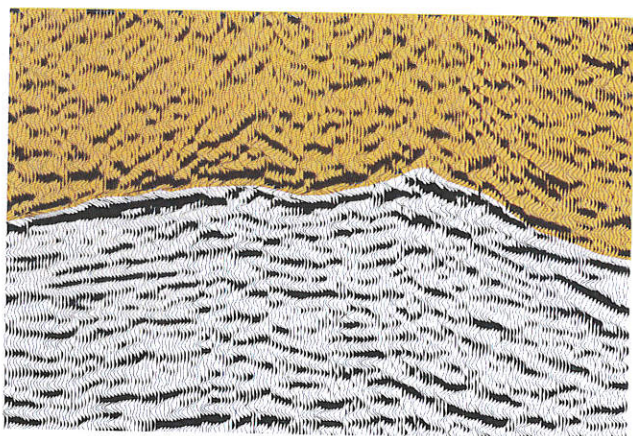


3-D prestack depth migration of the Mahogany Salt Sill (structural imaging by Diamond Geophysical Service Corporation).

DIAMOND GEOSCIENCE provides seismic lithology interpretation, rock-property analysis technology and training.

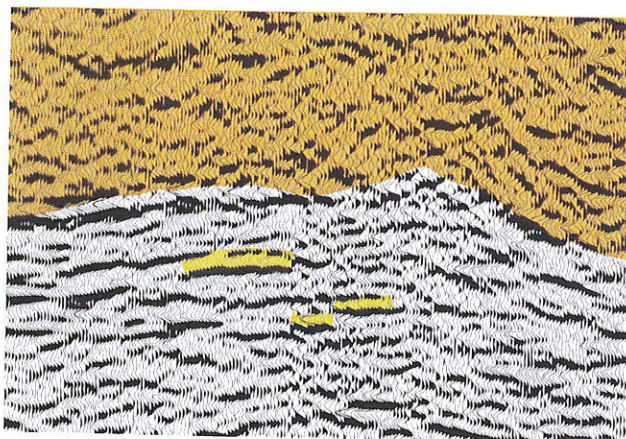


Corresponding vertical slice of 3-D pore-pressure data over the Mahogany Salt Sill (pore-pressure prediction by Diamond Geoscience Research Corporation).



Small angle stack from 3-D pre-stack depth migration in South Timbalier South - Phase I (3-D AVO analyses by Diamond Geophysical Service Corporation).

SALT



Large angle stack from 3-D pre-stack depth migration in South Timbalier South - Phase I.

Services and Products Provided by Diamond Geophysical

- ◆ 3-D survey design and program management
- ◆ 3-D time imaging (poststack and prestack)
- ◆ 3-D depth imaging (poststack and prestack)
- ◆ Consulting for both proprietary and multi-client projects

Training Courses Provided by Diamond Geoscience

- ◆ Rock-property and reflectivity modeling
- ◆ Seismic lithology interpretation
- ◆ Interpretive seismic data processing for lithology interpretation
- ◆ Practical signal processing
- ◆ Structural modeling

DIAMOND
Geophysical Service Corporation

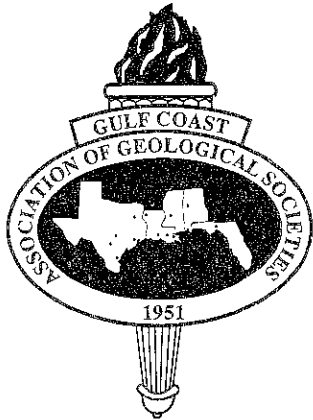
2925 Briarpark Drive ◆ Suite 400 ◆ Houston, Texas 77042
Tel: (713) 783-7837 ◆ Fax: (713) 783-9780

DIAMOND
Geoscience Research Corporation

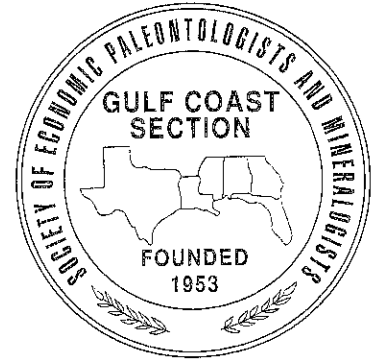
7134 S. Yale Ave. ◆ Suite 520 ◆ Tulsa, Oklahoma 74136
Tel: (918) 491-3456 ◆ Fax: (918) 491-3472

TRANSACTIONS

Gulf Coast Association of Geological Societies
A Section of the American Association of Petroleum Geologists



Volume XLVII
1997



William W. Craig
Editor - GCAGS

Barry Kohl
Editor - GCSSEPM

Prepared for

**the Forty-Seventh Annual Convention of the
Gulf Coast Association of Geological Societies
American Association of Petroleum Geologists Regional Meeting
*and***

**the Forty-Fourth Annual Convention of the
Gulf Coast Section of the Society of
Economic Paleontologists and Mineralogists**

in

New Orleans, Louisiana
October 15 - 17, 1997

Hosted by the New Orleans Geological Society

Copyright 1997 by the Gulf Coast Association of Geological Societies
No reproduction without permission of the President of GCAGS

1 9 9 7

G C A G S

Geology Across the Gulf

New Offshore Technologies Keys to Onshore Revitalization

New Orleans • Louisiana



CONVENTION COMMITTEE

Seated (L to R) Mark Gallagher, George Smith III, Ed Picou, Jr., John C. "Jack" Langford, Mary Walther, and Willis Conatser.

Standing (L to R) Sylvia Cureau, Eric Broadbridge, Cheryl Lukehart, Jeanne F. Phelps, Bob Ingram, Ronnie Youngblood, Irion Bordelon, Jr., Dave Balcer, Gary Jacobs, Carlo Christina, Bill Furlong, Sue Waters, Mike Fein, "Bob" Douglass, Phil Beron, Jr., Glen Shelton, David Reiter, Bill Moody, Jr., Bret Hampton, Barry Kohl, Charlie Corona, Bryan Stephens, Mike Styzen, Randy Smith, Duncan Goldthwaite, Art Waterman, and Jim Zotkiewicz.

Not in photo: Mike Roberts, Bill Craig, Wendell Olivier, Mike Nault, Fred Palumbo, Neil Wilson, and Brad Broekstra.

(Photo taken July 23, 1997)

COVER:

Map courtesy of the Louisiana Geological Survey from "Basic Mesozoic Study in Louisiana, the Northern Coastal Region and Gulf Basin" by E. G. Anderson, 1979, Plate 1, Folio Series #3. Rig insert is the Mars Drilling Platform courtesy of Shell Offshore Inc.

DEDICATION OF 1997

Transactions to THOMAS H. PHILPOTT

The Gulf Coast Association of Geological Societies is pleased to dedicate the *Transactions* of the 47th Annual convention to Thomas Hughes Philpott, a Founding Member, 1962 Past President, and 1990 Honorary Member.

Very simply stated, Tom is a geologist's geologist, and a man's man. For almost 60 years he has graced our profession with his presence in so very many ways, including working as a company geologist and officer, professor, currently as an independent and a consulting geologist, and of course by his many professional activities and contributions. He has distinguished himself over the years as one of the premier geologists in the Gulf Coast, and has been unflinching in his efforts to help his fellow geoscientists in every possible way.

Tom was born July 19, 1919 in Chicago, Illinois, where he spent his early childhood. He basically has been on his own since he was 15 years old, including growing up during the depression years. He later moved to Oklahoma where he received a B.S. degree in geology from the University of Oklahoma in 1939, where he also did graduate work. He began his professional career in 1939 with the Standard Oil Company of Louisiana, which shortly was taken over by the Carter Oil Company, a subsidiary of Standard Oil of New Jersey. He remained with Carter, including a tour in the Navy, until 1953. During most of this period he was based in Shreveport, LA, and became responsible for supervising exploratory activities in the Upper Gulf Coast. While with Carter, Tom also served as a Professor of Geology at Centenary College in the Evening School Division from 1947-53 and taught many of today's successful earth scientists. During this time he collaborated with Roy T. Hazard and B. W. Blanpied to create *The Standard Columnar Section of Arkansas, Mississippi and North Louisiana*, which is still in use. In addition, he was instrumental in publishing *The Reference Report on Certain Oil and Gas Fields of North Louisiana, South Arkansas, Mississippi and Alabama*, Volumes 1 and 2.

In 1953 Tom joined Olin Oil and Gas in New Orleans, LA, where he served as Vice President and Exploration Manager for almost ten years. In 1963 Humble Oil & Refining Company acquired Olin, and Tom subsequently joined Nilo Oil Company and LaSalle Oil Co. as General Manager. In 1964 he joined the Edwin L. Cox Company and was their Exploration Manager based in New Orleans, and remained with them until 1975. He supervised exploration in the eastern Gulf Coast, including Louisiana, Arkansas, Mississippi, and Alabama. During this period Cox participated in

many discoveries, including North Maurice Field in Lafayette Parish, LA. In 1981 he was a founder and became Senior Vice President of the Exploration Company of Louisiana. Since 1985 Tom has been an active independent and maintains a successful consulting practice based in Metairie, Louisiana. Among his many successes Tom and his colleagues were responsible for such discoveries as the Harrell Sand at Monroe, LA; Lake Erling Field and Lick Creek Field in South Arkansas; the prolific Lake Enfermer - Coffee Bay Field in Lafourche Parish; Beacon's Gully Field in Evangeline Parish; the Southeast extension of Live Oak Field in Vermilion Parish; South Manila Village Field in Jefferson Parish; Hibbs Lake Field in Catahoula Parish; and the Sunrise Field in Terrebonne Parish. His exploration team also discovered many Wilcox fields in Central Louisiana, as well as several other fields in South Arkansas.



Tom became an active member of the AAPG in 1941, and served as Vice President from 1963-64. The AAPG awarded him an Honorary Membership in 1993. He was a founder of the Gulf Coast Association of Geological Societies in 1950, and was the first editor of the *Transactions* in 1951. He served as President in 1962. In 1990 the GCAGS awarded him an Honorary Membership. His list of activities and the committees on which he has served both the GCAGS and AAPG is endless. Among these he was very instrumental in developing the national certification of Petroleum Geologists by the AAPG, and became

CPG #5. From 1960-62 he was Chairman of the AAPG Distinguished Lecture Committee. While president of the New Orleans Geological Society he was instrumental in developing a group health insurance program for independents, which subsequently became part of the AAPG Insurance Program. Among his many other professional organizations he is a member of the Society of Economic Paleontologists and Mineralogists (President 1952-53); Shreveport Geological Society, where he was President twice and was awarded Honorary Membership; New Orleans Geological Society, where he has been President and is an Honorary Life Member; American Geological Institute where he was Director 1953-55; Society of Independent Professional Earth Scientists; Sigma Gamma Epsilon honorary geological fraternity, and the American Institute of Professional Geologists.

Always a deeply religious and very humble person, Tom feels that he has been very fortunate to have had the cooperation and support of many people with whom he has been associated over the years, and he credits many of his colleagues for his success. Among

these are Harold Moses, for whom Tom worked at Carter and Olin; Edwin L. Cox; George G. Iles; Leslie Bowling; Leon Toups, and many others. It should be noted that there also is a host of geoscientists who include Tom among the reasons for their individual success.

Tom has been happily married for many years, and he and his lovely and devoted wife, June, live in Metairie, a suburb of New Orleans. He is very proud of his children; Arthur Richard Philpott, Dianna Drake, Howard Warren Drake, Orie Kerlin Drake, Kerry Bosley Drake, and deSha Drake Bahlinger, and his many grandchildren.

It is most fitting and appropriate that the Gulf Coast Association of Geological Societies honor one of their Founding Fathers, Past Presidents and Honorary Life Members by dedicating this Volume to him. This very significant recognition is about the only honor remaining that could be bestowed on him. Not only are our Association and profession enhanced and graced because of his having passed this way, but his many friends and community as well. I am very pleased to participate in recognizing this dear friend and mentor of so many years.

Donald I. Andrews

Industry Partners

The following companies have graciously supported the Forty-Seventh Annual GCAGS Convention. Their generous contributions have permitted the New Orleans Geological Society to present a full program of technical sessions, to publish the *Transactions* volume, present short courses, conduct field trips, hold sporting events, and for other essential items for the convention. Their support assures a successful meeting.

Platinum Sponsor

Schlumberger Well Services
BHP Petroleum
Phillips Petroleum Company
Texaco Exploration and Production, Inc. - Onshore and Offshore
Regions

Gold Sponsor

CNG Producing Company
Forcenergy Gas Exploration, Inc.
McMoRan Oil & Gas Co.
Mobil Exploration & Producing U.S. Inc.
Spirit Energy 76
The Louisiana Land and Exploration Company
The Shell Offshore Companies

Silver Sponsor

Bass Enterprises Production Co.
Chevron U.S.A. Production Company
W & T Offshore, Inc.

Bronze Sponsor

Amoco Exploration and Production - Offshore Business Unit
Exxon Company U.S.A. Production Division
Nippon Oil Exploration U.S.A. Limited

Contents

Dedication	iii	Past Recipient Outstanding Educator Award	xi
Sponsors	v	1996 A.I. Levorsen Memorial Award	xli
Report of the President, GCAGS	xiii	1996 Best Paper Awards GCAGS	xlii
Report of the President, GCSSEPM	xv	1996 Best Poster Awards GCAGS	xliv
Report of the General Chairman	xvi	Past Recipients, Best Paper Awards and A.I. Levorsen Memorial Awards, GCAGS	xlvi
Report of the Program Chairmen	xvii	1996 Best Published Paper Awards GCSSEPM	xlix
Report of the Editors	xvii	Past Recipients Best Paper Awards GCSSEPM	lii
Distinguished Service Award GCAGS	xiv	Officers and Committees Forty-Seventh Annual Convention - 1997	liv
Distinguished Service Award GCSSEPM	xxi	Board of Directors, GCAGS	lv
Past Recipients, Distinguished Service Awards, GCAGS	xxv	Officers of Member Societies, GCAGS	lvi
Past Recipients, Distinguished Service Awards, GCSSEPM	xxv	1997 Executive Council, CCSSEPM	lviii
Honorary Membership, GCAGS	xxvi	Standing Committees, GCAGS	lix
Past Recipients, Distinguished Honorary Membership GCAGS	xxxiii	1996 Financial Aid to Students, GCAGS	lx
Past Recipient, Distinguished Honorary Membership GCSSEPM	xxxiv	Past Officers and Convention Chairmen, GCAGS	lxi
Past Recipient Honorary Membership GCSSEPM	xxxiv	Past Officers, GCSSEPM	lxii
Outstanding Educator Award GCAGS	xxxv	Bylaws, GCAGS	lxii
		Bylaws, GCSSEPM	lxv

Technical Papers

Microbasin Analysis of South Louisiana: An Exploration Model, or: Hutton and Lyell Were Wrong Adams, Richard L.	1
The Nature and Origin of Barite Deposits Associated with Hydrocarbon Seeps in the Gulf of Mexico Slope Offshore Louisiana Aharon, Paul	13
Integrated Interpretation in the Deep Water Gulf of Mexico Anderson, Brian	21
Sequence Stratigraphy, Structural Styles, and Reservoir Characterization of the Tuscaloosa Trend Barrell, Kirk, A.	27
Petroleum Geology of Appleton Field, Escambia County, Alabama Benson, D. Joe	35
Sandstone Hardbottoms Along the Western Rim of DeSoto Canyon, Northeast Gulf of Mexico Benson, D. Joe	43
Tinsley Field, Yazoo County Mississippi: A deeper look at Mississippi's first oil field using 3-D seismic Birdwell, Maurice N.	49
Comparison of Fine-Grained, Mud-Rich and Coarse-Grained, Sand-Rich Submarine Fans for Exploration-Development Purposes Bouma, Arnold H.	59
Application of Bathyal Foraminiferal Events to the Neogene-Pleistocene Biostratigraphic Framework of the Gulf Coast Basin Breard, Sylvester Q.	65
New Zealand Outcrop Analog of Thin-Bedded Slope Fan (Channel-Levee) Reservoirs in the Gulf of Mexico Browne, Greg H.	75

Geologic Modeling for the CO₂ Tertiary Oil Recovery Project Garden Island Bay Field, Plaquemines Parish, Louisiana	
Burch, Larry	87
Regional 3D Seismic Well-tie lines to depict geology in Ship Shoal, South Marsh Island, and High Island Areas, offshore Gulf of Mexico	
Chowdhury, Abu N.....	93
Limestone Microfacies and Sequence Stratigraphy: Eagle Ford Group, North-Central Texas Outcrops	
Dawson, William C.	99
GOCAD 3D Visualization and Geostatistical Software: New workstation technology applied to an old offshore Louisiana Oil Field	
Dixon, Mark W.....	107
Horizontal Completions Improve Flow Rates and Recovery Efficiency in West Delta 54 Field	
Doyle, William J.....	113
Stratigraphic and Chronologic Framework for Fluvial Deposits of the Lower Nueces River, Corpus Christi, Texas	
Durbin, James M.	119
Blackened Smackover: Thermal Evolution and Mass Transfer Adjacent to a Subsurface Alkalic Igneous Dike in Northern Louisiana	
Dutrow, Barbara L.	131
Lake Sands: An Environmentally Friendly 3D Seismic Survey in the Louisiana Coastal Wetlands	
Ensminger, Allan.....	141
Foundered Shelf Edges - Examples from the Yegua and Frio	
Ewing, Thomas E.....	149
Seismic Facies of Mesozoic-Cenozoic Strata in the Perdido Fold Belt	
Fiduk, Joseph C.	159
Influence of Active Subsalt Normal Faults on the Growth and Location of Suprasalt Structures	
Ge, Hongxing	169
Deformation of Prograding Wedges Above a Ductile Layer- Applications of Physical Models to Geologic Examples	
Ge, Hongxing	177
Salt-Withdrawal Mini-Basins as Proven Producers Along Present and Paleo-Louisiana Slope	
Hamiter, Rhett.....	185
Limitations in the Use of Conventional Ground Water Techniques in Characterizing the Fate of Produced Waters in On-Shore Gulf Coast Sediments	
Hanor, Jeffery S.	193
Metamorphism, High Temperature Diagenesis, and Enhanced Hydrocarbon Maturation by Igneous Intrusion in the Smackover Formation, Northeastern Louisiana	
Heydari, Ezat.....	201
Modeling Salt in a Three-dimensional Structural Context	
Hoffman, Karen S.	215
3-D Geocellular Oil-Resource Determination in South Texas Frio Fluvial-Deltaic Reservoirs	
Holtz, Mark, H.	219
Sr Isotopic Composition of Oil-Field Brines in the Wilcox Group of Eastern Central Louisiana: Identification of Sources of Saline Contamination	
Huff, Glenn F.	221
Use of Landsat Thematic Mapper 5 in the Environmental Monitoring of a Gulf Coast Delta-Estuarine System	
Ishphording, Wayne C.	231
A Petrologic Analysis of Caliche within the Central Texas Region	
Jaynes, Russell S.	239

Redesignation of the Upper Lithofacies in the Hensel Formation on the Southwestern Flank of the Llano Uplift, Kimble County, Texas: A New Interpretation of the Depositional Environments Jones, James O.	251
Late Cretaceous Dinosaurs of the Southeastern United States King, David T.	263
Gulf of Mexico Cenozoic Bio-, Litho-, and Sequence Stratigraphic Event Chronology Lawless, Paul N.	271
New Insights into the post-Middle Jurassic subsidence and depositional history of offshore Alabama, northeastern Gulf of Mexico, based on backstripping analysis Li, Xiang	283
Seismic Expression and Depositional Setting of the Late Oligocene-Early Miocene Carbonate Unit, Offshore Alabama Liu, Qunling	291
Confirmation of Active Geologic Faults in Lake Pontchartrain Lopez, John A.	299
Identification of Deltaic Facies with 3-D Seismic Coherency Lopez, John A.	305
Hydrate Stability Zone Permanence Along Dynamic Louisiana Offshore Lowrie, Allan	311
3-D Seismic - An "Insurance Policy" Lowry, Bruce E.	317
Using 3-D Earth Modeling Technology to Revitalize Development in the Gulf of Mexico's West Delta 117 Field Luzietti, Eugene A.	323
Characterization and Evaluation of the Upper Jurassic Frisco City Sandstone Reservoir in Southwestern Alabama Utilizing Fullbore Formation MicroImager* Technology Mancini, Ernest A.	329
Sediments from Lakes Pontchartrain and Maurepas: Database Development and Preliminary Synthesis of Historical Chemical and Other Environmental Data Manheim, Frank T.	337
Fluid Flow and Heat Transfer in Overpressured Sediments of the Rio Grande Embayment, Gulf of Mexico Basin McKenna, Thomas E.	351
Controls on the Distribution of Oil and Gas, Mesozoic and Cenozoic of Mississippi Meylan, Maurice A.	367
Exploration and Production Analog for Lower Cretaceous Hosston Sandstone Reservoirs Mitchell-Tapping, Hugh	377
Long-term Sampling of Selected Heavy Metals Concentrations in the Bottom Sediments of Imperial River and Spring Creek, Lee County, Southwestern Florida Mitchell-Tapping, Hugh	385
Regional Extent and Hydrocarbon Potential of the Tuscaloosa Marine Shale **John., Chacko J.	395
Gulf of Mexico Subsalt Deformation Zones: Weak Formation Integrity Rather Than Anomalous High Pressure Zones Niemann, James C.	403
Rapid In Situ Survey of Metals in Sediments of Lake Pontchartrain, Louisiana Nokes, Scott E.	413
Evidence for Recent Migration of Geopressured Fluids along Faults in Eugene Island, Block 330 from Estimates of Pore Water Salinity **Lin, Guichang.	419
Development of Geopressure by Ductile Shear Deformation Nunn, Jeffery, A.	425
Historic Natural Shoreline Determination From Soil Borings and Sediment Analysis in Biloxi, Mississippi Oivanki, Stephen M.	435

Ingleside Barriers on East Texas - SW Louisiana Pleistocene Coast? Old Assumptions - New Evidence Otvos, Ervin G.	443
Lower Tuscaloosa Clastic Facies Distribution (Upper Cretaceous), Federal and State Waters, Eastern Gulf of Mexico Petty, Andrew J.	453
The Re-Discovery of White Kitchen Field, LaSalle County, Texas: A Tight, Heterogeneous Edwards Reef Gas Reservoir Railsback, Rick	463
Evolution of Sedimentary Architecture and Surface Morphology: Atchafalaya and Wax Lake Deltas (1973-1994) Roberts, Harry H.	477
Salt Geometry and Subsalt Trapping in the Enchilada Area, NE Garden Banks Robison, Brad A.	485
The South Georgia Basin: an Intergration of Landsat, Gravity, Magnetics and Seismic Data to Deliniate Basement Structure and Rift Basin Geometry Sartain, Sharie	493
Rigsite Geological Interpretation of a Deepwater Horizontal Well Schroeder, Tom S.	499
Integrated 3-D field study on workstation results in new reserves in an old field - High Island 140 Field, offshore Texas Schwartz, Bernie	505
Influence of Tectonics on Basin Shape and Deep-water Sedimentary Fill Characteristics: Examples from the Karoo Basin, South Africa Scott, Erik D.	513
Redevelopment of the Deep Tuscaloosa Gas Trend: A 3-D Seismic Case History of Judge Digby Field Sheppard, Frank C.	523
Modeling Waves and Circulation in Lake Pontchartrain Signell, Richard P.	529
The Cretaceous-Tertiary Boundary at Moscow Landing, West-Central Alabama Smith, Charles C.	533
Upper Miocene Dauphin Natural Gas Sands in Offshore Alabama Smith, Charles C.	541
Use of Synthetic and Antithetic Shear to Model the Development of Gulf Coast Listric Normal Faults Spang, John	549
Air Injection Enhanced Oil Recovery and 3-D Seismic: Revitalizing an Aging South Louisiana Oil Field Spencer, Jeff. A.	557
Comparison of Otolith-based Paleocology to other Fossil Groups: an Example from the Cane River Formation (Eocene) of Louisiana Stringer, Gary L.	563
Basal Yegua Shelf Margin Failures Along the Texas Gulf Coast Swenson, David R.	571
New Wave Parameters Due to Shoaling Tanner, William F.	579
Recognition of Low Resistivity, High Permeability Reservoir Beds in the Travis Peak and Cotton Valley of East Texas Turner, James R.	585
Project STARR - State of Texas Advanced O.&G. Resource Recovery Program Tyler, Roger	595
Sequence Stratigraphic Analysis of Plio-Pleistocene Turbidite Systems, Northern Green Canyon and Central Ewing Bank Areas, Northern Gulf of Mexico Varni, Peter	599
Reserve Growth in a Mixed Sequence of Deltaic and Barrier Island Frio Sandstones: Umbrella Point Field, Chambers County, Texas Vining, Mark R.	611

Potential Generation Capacity of the South Louisiana Hydrocarbon System	
Zimmerman, Ronald K.	621

Extended Abstracts

Correlation of Yegua/Cockfield Genetic Cycles, Texas and Louisiana	
Ewing, Thomas E.	631
Holocene Geologic Framework of Lake Pontchartrain Basin and Lakes of Southeastern Louisiana	
Kindinger, Jack L.	635
Gulf of Mexico Foraminiferal Size Data & the Incorporation Into A Paleocologic Zonation Using the Paleocologic Expert System (PALEX)	
Ragan, Gerald M.	639
Formation MicroScanner* Logs for Evaluating Stratigraphic Features and Key Surfaces in Thin-Bedded Turbidite Sequences	
Spang, Robert	643
Fill'er Up, Tony...and check the Oil: Petroleum Migration Into Pay Sands at the Mars Field, Deepwater Gulf of Mexico	
Titus, Marshall W.	647

Abstracts

Gulf Coastal Plain Marker Fossils in the Revised Miliolidae	
Andersen, Harold V.	651
High Resolution Seismic and Core Data from Northern Gulf of Mexico Shelf Used to Develop Self-Instructional Web Sites in Sequence Stratigraphy and Reservoir Analysis	
Anderson, John B.	651
Examination of MWD Wireline Replacement by Decision Analysis Methods: Two Case Histories	
Beck, Gary F.	651
Videomicroscopy: Linking Wellsite Geology and the Corporate Exploration Team	
Cash, Steven, C.	652
Prolific Upper Pleistocene Gas Sands: Southeastern High Island and Southern West Cameron Additions, Offshore Northern Gulf of Mexico	
Dawson, Bruce W.	652
Stable-Isotopic Comparison of a Late Eocene Archaeocete Whale, <i>Basilosaurus cetoides</i>, to a Modern Cetacean, <i>Tursiops truncatus</i>	
Emmer, Edwin W.	652
Pore-Fluid Chemistry Reveal Processes Occurring in Hydrocarbon Seeps From Deepwater Gulf of Mexico	
Fu, Baoshun	653
Toward A Method and Theory for Restoring Coastal Louisiana	
Gagliano, Sherwood M.	653
Natural Attenuation of Explosives at the Louisiana Army Ammunition Plant, Minden, Louisiana	
Harrelson, Danny W.	654
Interpreting Sequence Stratigraphic Architecture from Biostratigraphic Signatures: Case Studies from the Northern Gulf of Mexico	
Jones, Garry D.	654
Borehole Electrical Images and Dipmeter Patterns of Fluvial-Deltaic Reservoirs: Outcrop Examples from Arkansas	
Kear, George R.	654
Interaction Between Salt Diapir Growth and Sedimentation: An Example from Cote Blanche Field, Louisiana	
Kolarsky, Radim A.	655

Novel Processing and Facies and Tectonic Results from North Louisiana Seismic Data	
Makarov, Valentin	655
Short-Lived Radioisotopic Chronology of Lake Pontchartrain Sediments	
Marot, Marci	656
Evolution of New Technology for Downhole Geology	
Nurmi, Roy	656
Carbonate Reservoir Characterization with Integration of New Technology	
Nurmi, Roy	656
Formation MicroImager* For Calibration and Complete Utilization of 3-D Seismic in Exploitation	
Painter, James H.	657
A Late Quaternary Model for the Evolution of the Mississippi River Delta and Incised Valley	
Penland, Shea	657
Coastal Geomorphology and Landscape Changes in the Pontchartrain Basin	
Penland, Shea	657
Atchafalaya-Wax Lake Deltas: An Update on Geologic and Oceanographic Impacts on the Latest Mississippi River Delta-Switching Event	
Roberts, Harry H.	658
Accessing State Ground-Water Database and Displaying Geospatial Data Through Innovative GIS/Internet Technologies	
Robichaud, Marc	658
Deepwater Site Characterization: the Preliminary Results of the Deep-Tow Survey of Pigmy Basin and Alaminos Canyon, Gulf of Mexico	
Rutledge, Anne K.	658
Integrated Use of Multiple Remedial Technologies to Address DNAPL Contaminated Aquifers at Paxton Polymer Company, Baton Rouge	
Schramm, William, H.	659
Delta-Front Turbidites: A Poorly Understood But Productive Play Type in the Gulf Coast	
Stelting, Charles E.	659
Authigenic Muscovite and Stylolitization Timing, Jurassic Norphlet Formation, Offshore Alabama	
Thomas, Andrew, R.	660
Near-trace 3-D Seismic Cubes: A New Tool for Sequence Stratigraphic and Hazards Studies	
Trabant, Peter K.	660
The Gulf of Mexico as a global analogue: a comparison of AVO and Energy Absorption with the South Caspian Sea	
Ware, Paul	660
Guiding the Deviated Well Bore	
Willis, James J.	661
Extensive Salt Sheet Provinces at Louisiana Shelf, Gulf of Mexico	
Xue, Fangjian	661
Advertisements	A-1
Index of Advertisers	A

* Trade Mark Copyright

** not in alphabetical order

Report of the President

Gulf Coast Association of Geological Societies

Mark J. Gallagher

On behalf of the New Orleans Geological Society, welcome to the forty-seventh Annual Convention of the Gulf Coast Association of Geological Societies (GCAGS). It has been a great privilege and honor this past year to serve as the president of the Gulf Coast Association of Geological Societies. Through the dedicated efforts of our officers, committee members and our twelve member societies, the Gulf Coast Association of Geological Societies continues to be the premier section of the American Association of Petroleum Geologists. Thank you for your outstanding effort.

The theme of this year's convention is *Geology Across the Gulf—New Offshore Technologies—Keys to Onshore Revitalization*. I feel the theme is appropriate due to the recent resurgence in our industry. It is also appropriate that we dedicate this year's *Convention Transactions* to one of the founding fathers of the GCAGS, Mr. Tom Philpott. Tom has served as a vice president of the AAPG, president of SEPM, and president of both the Shreveport and New Orleans Geological Societies. Tom continues to be active professionally and as a volunteer. His dedication to the science of Petroleum Geology and his professional societies is truly inspirational.

Conventions are an arduous task for a local society and require the organization of a small army of volunteers. Planning for this convention began three years ago, with the appointment of Mr. John C. "Jack" Langford as General Chairman of the convention. Jack is a fantastic organizer. He and his committee have worked for these three years on the planning and execution of this convention. The Vice Chairmen of the convention are Mr. Edward B. Picou, Jr. - Technical, Mr. George E. Smith III - Administrative, and Mr. Arthur S. Waterman - GCSSEPM. Please take the time congratulate the convention officers and all of the convention committee members for their efforts. They have put together an outstanding program of



talks, posters, field trips, short courses and social events. Additionally, I want to thank the convention corporate sponsors for their generous support.

Host societies are not alone in planning conventions. They are backed by the GCAGS Convention Committee and the GCAGS Board of Directors. Thanks to their efforts our conventions have been very successful these last few years. Successful conventions mean a financially sound GCAGS. The GCAGS Convention Committee is chaired by Mr. Dan L. Smith. Dan and his committee have made several recommendations, which have made GCAGS Conventions a model for regional conventions. In fact, last August Dan co-chaired a summit on regional meetings in Denver for the AAPG to share this success with other AAPG sections. All convention budgets and plans are subject to the approval and guidance of the GCAGS Board of Directors. I would like to thank each member of the board for their support of this planning process.

In addition to the Convention Committee there are six other standing committees of the GCAGS. These committees handle most of the societies annual business activities. Awards and Nominations, chaired by Dr. James O. Jones, recognizes our outstanding members, speakers, and educators at our annual convention. The Finance Committee handles business matters and taxes. It is chaired most ably by Mr. Howard Kiatta. Mr. Ralph Richardson is our outgoing Financial Aid-to-Students Committee Chairman. He has done an outstanding job helping students with their research. Mr. Dave Pope is the GCAGS Historian. His memory is amazing and his advice is always welcome. The Long-Range Planning Committee is chaired by Mr. John Amoruso. John and his committee are working on several diverse proposals. Some proposals under consideration are assisting local societies with speakers and looking for ways to help members with 3D seismic interpretation training. Dr. Robert Boyer



Robert F. Travis
Vice-President



Eric C. Broadbridge
Secretary



Gary W. Jacobs
Treasurer

is the Chairman of the GCAGS Publications Committee. Bob and his committee are responsible for the development, production, sales and storage of all GCAGS publications. Currently, they are working on the development of a 3D seismic field studies volume. It should be completed in time for the 1998 convention. These chairmen and their committee members have done a tremendous job organizing the societies' activities, please accept my congratulations for a job well done.

Birdena Schroeder is the Executive Secretary of the GCAGS. Birdena screens the calls, answers all the questions, handles the mail, and most importantly advises the president. Birdena attends all

the board meetings and both AAPG and GCAGS Conventions. Birdena thank you for all of your help. You have made my job much easier. Additionally, I would like to thank past president Gerald Roff for his support and patience in answering my numerous questions. Good luck to incoming president Bob Travis, I know you will enjoy your year as president.

I know all of the members in attendance at the convention will make every effort to learn new skills and renew past acquaintances. I have one request, please take the time to congratulate the host committee for a job well done. Most of all, I hope all of you enjoy New Orleans and all of its treasures!

Report of the President

Gulf Coast SEPM

Paul Weimer

I join my colleagues in welcoming you to the 47th Annual meeting of the GCAGS, and the 44th annual convention of the GCSSEPM. Since its inception in 1953, the GCSSEPM has been a major contributing society in the GCAGS. GCSSEPM has played a leading role in disseminating information on this economically important province, including stratigraphy, sedimentology, biostratigraphy and paleontology, structural geology, source rocks and geochemistry.

This year's technical theme, "New offshore technologies: keys to onshore revitalization", is especially important in capturing the tremendous upsurge in drilling activity during the past few years, both onshore and offshore. The oral and poster programs are an outstanding summary of advancements made during the past few years. The field trips and short courses also summarize new developments in various disciplines and other geologic problems.

Thanks to those in the GCAGS who have done such an admirable job running and coordinating this year's convention, particularly Jack Langford, Ed Picou and George Smith. Also, thanks to the New Orleans Geological Society for serving as the local host society.

A special thanks those who have worked to compile the GCSSEPM activities: Art Waterman (Vice Chairman), Mike Styzen (Technical Program Chairman), Barry Kohl (Proceedings Editor), and Mike Nault (Awards Chairman). They have worked hard to organize and compile an outstanding technical program.

As outgoing president, I would like to make one final comment. The 5600 feet elevation contour runs through my backyard here in Boulder. Clearly, I live a long way from the onlap point of the Gulf Coast province. Why, then, am I associated with GCSSEPM? Quite simply, in my opinion, this society does more for the greater good of the petroleum industry than any other society its size. The GCSSEPM Foundation has sponsored a major research conference every December since 1980. These confer-



ences serve an important role in bringing together the technical experts in a field with members of the geologic community; interactions at these meetings have been incredibly fruitful. For the past three conferences, we have worked hard to expand the theme of the conference beyond the Gulf basin to include international-related topics. These efforts have paid off handsomely, as the conferences have been great technical successes and have received broad-based support from Industry and individuals.

In addition, these conference proceedings volumes have reached an international audience. All of these proceedings volumes contain state-of-art papers that cannot be accessed in other journals. The next two GCS-SEPM Annual Research conferences also promise to contain strong, international technical programs: the 1997 meeting will be on non- to shallow-marine siliciclastic reservoirs—a global perspective (Keith Shanley, convenor), and 1998 meeting will cover carbonate reservoirs—a global perspective (Charlie Kerans, Jerry Lucia, Bob Hardage, convenors). Be sure to

sign up now for this year's conference, as space is filling up.

What impresses me the most about GCSSEPM is the unselfish dedication of a core group of people who really make the society work. The GCSSEPM Foundation, which is a tax-free organization independent from the GCSSEPM, is served admirably by three trustees: Sheila Barnette, Denise Butler, and Mike Nault. Bob Perkins has served as the Executive Director for the past 17 years. Their continued efforts make this a smooth-running, wisely-managed society. I have had the privilege to work with an outstanding group on the Executive Committee this past year: Skip Breard (Vice President), Rick Major (Secretary), Mike Styzen (Treasurer), Rashel Rosen (Past President), and President-elect James Jones, to whom I happily pass the baton for his tenure as president during 1998. I thank all of them for their support and wise counsel. It has been a real pleasure working with all of them. GCSSEPM is in good hands. Have a great convention and a good time in the Big Easy.



James O. Jones
President-Elect



Sylvester Q. Breard
Vice-President



R. P. "Rick" Major
Secretary



Michael J. Syzen
Treasurer



Rashel N. Rosen
Past President

Report of the General Chairman, the Vice Chairman-Technical, and Vice Chairman-Administrative — 1997

The city of New Orleans has always welcomed you, at any time, day or night. It is especially fitting that in our 47th year we return to the "Birthplace of GCAGS."

In 1951 a few visionary geologists believed that Gulf Coast geologists should gather annually and exchange their knowledge and discuss their problems for the betterment of our science and industry. New Orleans was selected because this was their workplace. The last of the founding fathers is still in New Orleans practicing his love of geology and this is one of the reasons we dedicate this year's *Transactions* to Thomas H. Philpott.

Today's GCAGS/GCSSEPM Committees are still following in their footsteps as in 1951, by exchanging information and ideas about "The Geology Across the Gulf" with emphasis on new technologies offshore and how these can revitalize onshore areas.

The New Orleans Geological Society and its Auxiliary, together with the Gulf Coast Section of SEPM formally welcome each of you. It has truly been a labor of love and pride that at last count 123 individuals have contributed their time and talent to bring you an excellent group of technical presentations, together with exciting short courses and field trips. Of course, there will be time for visiting, fun and frolic, and all that "jazz."

So now that you are here — enjoy!!

John C. "Jack" Langford
General Chairman

All parts of the Technical Program were designed to live up to the original concepts of the GCAGS. From the letter of organization penned by A. P. Claudet on May 16, 1950, I quote: "We feel that a permanent regional committee of the Southern Geological societies will be of great advantage to all the young geologists, who will not hesitate to prepare papers, even short papers, on small subject(s), which are not necessarily of national interest but are of great interest regionally." — The Technical Program Committee is of the opinion that the gulf coast geologic community admirably responded to our call for papers, thereby allowing us to fashion an oral and poster technical program of high-calibre content. The Committee was also pro-active in developing four short courses on topics of paramount importance in the geologic arena. The instructors of these courses are definitely "world-class" geoscientists who will make each of



George R. Smith III
*Vice Chairman-
Administrative*

John C. "Jack" Langford
General Chairman

Edward B. Picou, Jr.
*Vice Chairman-
Technical*

these courses well worthwhile attending. New Orleans, built on the modern Mississippi River delta plain, has its limitations for local field trips; however, the Field Trip Committee developed four outstanding trips which span the stratigraphic section from

Holocene through the Upper Jurassic. Each of these promises to be highly informative and the instructors are exceptionally talented in leading field excursions. By being aggressively pro-active from the outset, we have every reason to believe the Technical Program is one of the best to be offered recently for our gulf coast geologic community.

Edward B. Picou, Jr.
Vice Chairman-Technical

From the beginning of planning for the 1997 GCAGS Convention, a strong focus was made to look at ways to bring you a great technical program, but also minimize "recreating the wheel". Because of this philosophy and efforts of our committees, new procedures can be passed on to future convention boards for easier planning efforts. Some of these new procedures include utilizing Quicken software for the financial needs of the convention and Meeting Power software for the convention registration needs. By passing along these software packages and associated files, future conventions may utilize these if desired to reduce the effort needed to create a successful meeting. We greatly appreciate the efforts of Ms. Betty Furlong, Ms. Annette Hudson, and Ms. Carol St. Germain for their help during the convention preparation.

Another strong focus of our early efforts involved improving the technical program and publicizing it to both potential sponsors and attendees. Our Support, Advertising and Publicity Chairpersons have done a great job working together in this effort, from attending management breakfast meetings, meeting with individual sponsors, and passing out information at the AAPG and GCAGS conventions. A change you will notice this year is at the Tobin Theater, which debuts a new virtual reality environment format. Because of these efforts we hope to have one of the most successful conventions in recent years. Thanks to all who have helped!

George E. Smith III
Vice Chairman-Administrative

Report of the Program Chairman

Forty-Seventh Annual Convention — 1997

M.R. "Bob" Douglass - Technical Program Chairman

Michael J. Roberts - GCAGS Chairman

and

Michael J. Styzen - GCSSEPM Chairman



Michael J. Roberts
GCAGS Chairman



M.R. "Bob" Douglass
Technical Program Chairman



Michael J. Styzen
GCSSEPM Chairman

We believe we have assembled a program that thoroughly covers our theme of Geology Across the Gulf: New Offshore Technologies—Keys to Onshore Revitalization. The program has a strong mix of cutting-edge deep water papers along with onshore field studies that use the newest technologies. A mix of Mesozoic through Quaternary papers provides balance. An entire session on the Lake Pontchartrain Basin, one of the world's largest estuarine systems, is the keystone of a strong Quaternary Geology program. An excellent session has also been assembled on Environmental Geology. Exciting examples of deep water sedimentation from overseas add an international flavor. Another whole session is devoted to new downhole technology. Filling out the oral program is a session which uses the latest advances in computer technology to present the papers. Our poster sessions follow the lead of the oral presentations. Many of our oral presenters are also showcasing their papers in the poster sessions so attendees can discuss the material in more detail with the authors. The assembled Short Courses are in step with the theme and emphasize new deep water geology and advanced technology. Field Trips highlight examples of Quaternary and Tertiary geology discussed in the program. The

Tobin Theater will entertain viewers with virtual reality trips into 3D seismic and hydrocarbon reservoir models.

At the core of this excellent Technical Program is a group of papers solicited from selected authors by the Program Committee. Complementing this is an outstanding slate of papers contributed in response to the call for papers that filled out our program beyond our expectations. The organization of this fine program would not have been possible without the hard work of Chairs: David E. Reiter (Poster Session), Cheryl Lukehart (Short Courses), Byran Stephens (Field Trips), Dave Balcer (Tobin Theater), Ron Youngblood (Audio Visual) and committee members Mike Center, Mike Fogarty, Mike Gallagher, Bob Ingram, Brian O'Neill, and Bob Sylvester who served on the Program Committee. Special congratulations and thanks go to Ed Picou who used his considerable computer and organizational skills in the monumental task of receiving and organizing the diverse contributions to this outstanding program. His efforts allowed the Program Committee to easily blend the papers into a coherent whole.

We believe the papers presented here will be looked on in the future as major contributions to understanding Gulf Coast Geology.

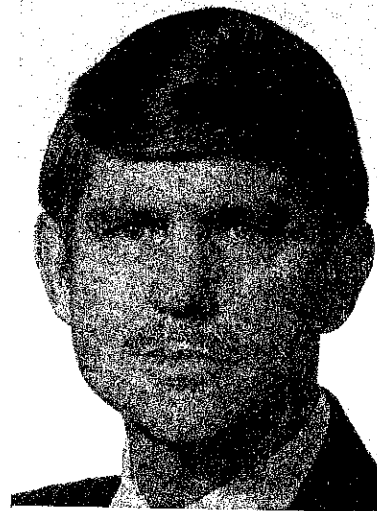
Report of the Editors

Gulf Coast Association of Geological Societies Transactions, Vol. 47, 1997

Bill Craig and Barry Kohl



Bill Craig
GCAGS



Barry Kohl
GCCSEPM

First, we would like to thank all 109 authors who contributed articles and abstracts to the 1997 GCAGS *Transactions*. Without this willingness to share research results with colleagues, the whole concept of the GCAGS would be significantly, if not fatally, wounded.

It is apparent when reviewing the articles submitted for this year's *Transactions*, as well as those of previous years, that this annual volume is the undisputed number-one depository for research on Gulf coast geology, particularly as related to hydrocarbon occurrence in the Gulf province. Those who publish in the *Transactions* can be well assured that they are participating in an important tradition.

Each article went through at least two peer reviews. We thank those who volunteered for this task; they are almost as important to a quality *Transactions* volume as the authors themselves. Those who gave of their time and experience to review manuscripts are recognized below, in the case of the GCCSEPM team of editors, and in the section on Officers and Committees found elsewhere in this volume for those who volunteered to review GCAGS manuscripts. We thank you, we thank you, we thank you.

We tried to catch all those unconscious mistakes you miss when reading over a piece you know by heart, and at the same time make suggestions that might result in a better article scientifically. We most certainly appreciate the positive response of the authors to the review process.

We believe that the upturn in the oil industry is reflected in the

status of manuscripts for this year's *Transactions*. Because of the time constraints of their employment, an unusually high number of authors were unable to complete a manuscript for publication of their oral presentations. We see this as a good sign rather than bad. We hope that the resurgence in hiring geoscientists will bring many company staffs up to par so that next year we can expect a re-invigorated industry and many more papers. Nonetheless, we are looking forward to hearing the oral presentations and seeing the posters illustrating the fine papers submitted this year.

We would like to acknowledge Ed Picou and Glen Shelton for their work with us as we prepared manuscripts for the printer. Ed is also the inspiration behind the cover of this volume and the convention logo, and created by Nick Kempf.

Lastly, we sincerely thank Kelly Hurd and his staff at Houser Printing. These hardy souls, who suffered through our glitches and missed deadlines, did a yeoman's job in placing this handsome volume in your hands by convention time.

One of us (Craig) would like to point out the other of us (Kohl) is, believe it or not, doing this job for the second time. He would like to thank the following members of his editorial staff: Richard H. Fillon, Elizabeth McDade and Paul Lawless (Texaco); Gay Larré and Mike Smith (Mineral Management Service); Mike Styzen (Shell); George Flowers (Tulane Univ.); Dale Easley and Kraig Derstler (Univ. Of new Orleans); Chuck Stelting (Chevron); and Greg Stone (Louisiana State Univ.)

Distinguished Service Award

Gulf Coast Association of Geological Societies

M. R. "Bob" Douglass



M.R. "Bob" Douglass was born in Lawrence, Kansas; received his primary and secondary education in Pittsburgh, Pa.; then returned to Lawrence to attend college. Bob was awarded a B.S. in Geological Engineering in 1953 and received a Masters in Geology the following year while working under the tutelage of the legendary R.C. Moore.

Bob went to work for Texaco in 1954, doing mapping in the Paradox and Permian Basins. His work was instrumental in the discovery of Aneth Field in the Paradox Basin. Bob was transferred to South Louisiana in 1958 where his mapping led to major field extensions of Texaco's Golden Meadow, Leeville and Lake Barre fields. In addition he was responsible for Texaco's participation in the discovery of Blackjack Creek Field in Santa Rosa County, Florida.

In 1973 Douglass left Texaco to become regional manager for Ashland Exploration. Under his leadership Ashland drilled successful wells in Louisiana and Mississippi. In 1978 Bob joined Moseley Petroleum in New Orleans to generate and screen prospects. He successfully completed six wells before moving on to Westover Oil Company in 1981 where he drilled five productive wells. Wacker Oil hired him as Vice President for the Southeastern U.S. in 1987. Under Bob's leadership Wacker was able to discover Grays Creek Field in Livingston Parish. When Wacker was sold in 1990 Bob went back to generating and selling prospects in South Louisiana.

M.R. "Bob" Douglass has served the geological community by being a participating member and leader in many geological organizations.

He has been a member of AAPG since 1952. Has served as a delegate on two occasions, participated on several committees and is a member of DPA.

He was given NOGS' Outstanding Member Award in 1982, served as President in 1987-88 increasing the membership to a record level. In 1992 he received Honorary Life Membership. He has been chairman of numerous committees and during his tenure as trustee of the Memorial Foundation was instrumental in getting scholarships awarded to students for three years instead of one year. Bob was a Contributing Editor of the NOGS-HGS publication "Productive Low Resistivity Well Logs of Offshore Gulf of Mexico" and is presently chairman of an Ad hoc committee to aid the Louisiana Department of Natural Resources in setting up an oil data repository.

Bob is a member of SIPES having been Secretary, Vice Chairman and Chairman of the local chapter and Chairman of the 1994 National Convention in New Orleans.

Douglass has served GCAGS as Exhibits Chairman in 1978, was NOGS Representative in 1988 and is the Program Chairman for the 1997 convention in New Orleans.

Bob has two grown children, Rae and Jennifer, and is the proud grandfather of Raven Myers. He has been a widower since 1994 due to the untimely death of his lovely wife Corinne.

M.R. "Bob" Douglass has devoted his adult life to the service of the geological community and is most deserving of this Distinguished Service Award.

Charles J. Corona

Distinguished Service Award

Gulf Coast Association of Geological Societies

John C. "Jack" Langford



John C. "Jack" Langford has contributed many years of distinguished service to the New Orleans Geological Society, to the Gulf Coast Association of Geological Societies, and to the petroleum industry.

Mr. Langford has been an active member of the New Orleans Geological Society since 1958, and has chaired numerous committees, served as Treasurer, Vice President, President Elect and President. In 1987 he received the Society's Outstanding Service Award, and in 1993 he was awarded Honorary Life Membership. Notable among his committee chairmanships was his leadership of the Membership committee in 1987-1988, when he spearheaded a membership drive which resulted in a record enrollment of 1500 members. This total was remarkable because it was achieved during the oil recession when other societies were losing members. This effort was followed by the publication of the 1988 Photo Directory.

As President of the Society in 1991-1992 he enthusiastically promoted the celebration of the Fiftieth Anniversary of NOGS. Jack personally directed the publication of the Golden Anniversary Membership Directory, which featured photographs of members and events involved in the Society's history.

Jack has provided innovative and continuing service to the GCAGS. He served as Entertainment Chairman of the 1971 GCAGS Convention and as Publicity Chairman of the 1988 Convention both hosted by NOGS. He has served on the GCAGS Board, and is General Chairman of this, the 1997 GCAGS Convention.

Mr. Langford was born in Algiers, Louisiana. He served in the United States Navy from 1945 to 1949 and then entered Louisiana State University, receiving a B.S. Degree in Petroleum Engineering in 1953.

Jack was employed by Subsurface Evaluation Company from 1953 to 1963 and then founded Langford and Meredith Laboratories. In 1973 Langford and Meredith-Hycalog was merged into the Analysts. Based upon his recommendation The Analysts set up operations in London with Jack serving as Managing Director-North Sea. From that base he managed the company's operations in the Eastern Hemisphere. He and his family lived in London from 1973 to 1977. After relocating to Houston he became General Manager-Frontier, with supervisory responsibilities in Canada, South America and Central America.

In 1985 Jack formed JCL Services and has operated as a consultant since.

In his personal life as well as his professional career, Jack has been a dedicated volunteer. He has donated his time and services to civic and religious organizations in the area, among them the Kiwanis Club-New Orleans. He supervised for two years a Kiwanis summer camp for underprivileged youth; he later served as Vice President and President. He was a member of the Governing School Board of St. Charles Catholic High School for three years, and has been a Trustee and past Chairman of the Administrative Board of the St. Charles Methodist Church.

Jack is the devoted husband of the former Beverly Mahoney; the father of three beautiful daughters: Susan, Karen and Beverly Anne; and the grandfather of four adoring grandchildren.

For his enthusiastic and unselfish service to NOGS, GCAGS, and his community, Jack is truly deserving of the Distinguished Service Award.

Carlo C. Christina

Distinguished Service Award

Gulf Coast Section SEPM

Edward B. Picou, Jr.



Edward B. Picou, Jr., consulting micropaleontologist, has a long and distinguished career in Gulf Coast exploration and production activities. During that career he has been, and continues to be, an active and supportive member of the Gulf Coast Section of SEPM and the GCSSEPM Foundation.

Ed was born March 26, 1932 in Baton Rouge, Louisiana. He received a B.S. degree in Geology from Louisiana State University in 1955. Following graduation, Ed served as an officer in the Army Corps of Engineers from 1955 to 1957, seeing active duty in South Korea. On his discharge from the Army as a First Lieutenant in 1957, Ed planned to return to LSU to pursue a Master's degree. His plans were sidlined by an encounter with Shell Oil Company recruiters on the LSU campus. Ed was offered a position as a paleontologist in Shell's Southern Louisiana Exploration Division in Baton Rouge. Ed spent 34 years at Shell with multiple assignments in Lafayette, Houston and New Orleans. During the 1960s Ed was active in developing and applying local biostratigraphic zonations for Cenozoic exploration and development in south Louisiana and offshore Gulf of Mexico. He spent many days and nights applying these zonations at the wellsite, particularly in Shell's Miocene and Oligocene salt dome fields. Ed's prodigious memory for fossils and their stratigraphic context are legendary at Shell. Ed played an active role in the development of the offshore Pleistocene play during the 1970s. He rose through assignments of increasing responsibility, supervising a staff of more than 20 paleontologists during the mid 1980s. Within Shell, and in the geologic community at large, Ed was a champion for the application of paleontology to hydrocarbon exploration and exploitation efforts. Ed was promoted to Paleontological Advisor in 1981, and finally in 1989, to Exploration Consultant, Shell Exploration's highest technical rank. Despite his supervisory responsibilities, Ed always carved out time to analyze well samples at the microscope. This allowed Ed to "retire" from Shell in 1991 and yet remain as active as ever in consulting for Gulf Coast exploration and production companies. He has always challenged himself and others to "ferret out" the details hidden in pale-

ontologic residues.

In the 1978 GCAGS *Transactions* Ed published a much cited paper with the late Doris M. Curtis entitled *Gulf Coast Cenozoic: A Model For the Application of Stratigraphic Concepts to Exploration on Passive Margins*. This paper is a modified form of an oral presentation Ed and Doris made as the Gulf Coast Section's contribution to SEPM's 50th Anniversary Program at the 1976 AAPG Annual Meeting in New Orleans and was also selected as one of the "Best of AAPG" papers for presentation in the 1977 meeting of the Society of Exploration Geophysicists. He also presented a paper entitled *McAllen Ranch Field: Depositional Environments of Reservoir Sandstones and Associated Shales* at GCSSEPM Foundations 2nd Annual Research Conference in 1981 which dealt with the controversial subject of recognizing deep-water versus shallow-water sedimentary facies in the complex growth fault structures of the Gulf Coast.

Over his career Ed always took an active role in all of the professional societies he joined, including SEPM (Society for Sedimentary Geology), American Association of Petroleum Geologists, Society of Independent Professional Earth Scientists, New Orleans Geological Society, Baton Rouge Geological Society, Houston Geological Society, Paleontological Society and the Paleontological Research Institution. He is a fellow of the American Association for the Advancement of Science and the Cushman Foundation for Foraminiferal Research. Ed has been active in the New Orleans Geological Society, having been a member since 1960. Following many years of diligent committee work, Ed was elected President of NOGS in 1992 and Director in 1996. His consulting office across the hall from the NOGS office has led to an even more active role the society's activities. In his "retirement", Ed has become quite proficient in both Mac and PC computing and has applied these skills to the benefit of his professional societies. He has been an editor of *NOGS LOG* since 1994 and is Vice Chairman-Technical for the 1997 GCAGS meeting in New Orleans.

In his tireless service of the profession, Ed has always had a

particular fondness for SEPM and its sections, maintaining membership in the Gulf Coast and Pacific Sections as well as the North American Micropaleontological Section of SEPM (NAMS). He was SEPM Vice President 1979-80 and has served on a myriad of SEPM committees from 1968 through 1986, including the Membership committee, Nominating committee and long and active involvement on the Conventions Policy committee (1974-77, 1983-86). This year Ed was tapped to be a Regional Representative for the SEPM Foundation's Endowment committee. Ed served two consecutive terms as President of NAMS providing stability for the young organization and helping to build a financial basis from which to carry out its endeavors to promote the use of micropaleontology.

Ed has been a member of the Gulf Coast Section of the SEPM since 1958. He served as President 1972-73 and SEPM Technical Program Chairman for the 1978 GCAGS meeting in New Orleans. Ed was in on the beginning of the GCSSEPM Foundation's extremely successful Research Conference series serving as a member of the Research Symposium Committee from 1979-1982 which included the inaugural conference held in 1980. He has been an active supporter of the research conferences ever since. Ed was as Trustee of the Gulf Coast Section Foundation from 1984 to 1986, serving as Chairman in 1986. Ed was a member or chairman of GCSSEPM nominating committees in 1975, 1977, 1985, and 1993 seeking out excellent candidates to lead the Section. In 1984 Ed was awarded

Honorary Life Membership in GCSSEPM. Whenever called upon to serve, Ed was willing and able, devoting both his energy and time to the cause.

Currently Ed is Chairman of an ambitious GCSSEPM committee which is called the Gulf Coast Taxonomic Equivalency Project. This long overdue effort is an attempt to compile a listing of all of the microfossil species used in subsurface stratigraphy and paleoenvironmental analyses in the Gulf Coast from the Pleistocene down to the top of the Eocene. The plans call for illustration and description of these important fossils and a synonymy for every taxon used by companies and consultants. Ed, known to us workers as "the Big Guy", is guiding a group of some 25 to 30 micropaleontologists across the Gulf Coast (and beyond) in this effort. The product upon completion should be a fabulous resource for both the paleontologic and geologic community of the Gulf Coast.

Ed has cast a long shadow in Gulf Coast micropaleontological circles. He served as a mentor to a whole generation of Shell micropaleontologists. Ed is highly respected for his knowledge of Gulf Coast stratigraphy within Shell and the geological community at large. He is as true gentleman who is always willing to lend a hand to a good cause. At a time when many would be content to sit back and let others do the work, Ed remains incredibly active. It is entirely fitting that he be awarded this Distinguished Service Award by the Gulf Coast Section SEPM.

Brian J. O'Neill

Distinguished Service Award

Gulf Coast Section SEPM

Bonnie R. Weise



Bonnie Weise was born in Taylor, Texas on December 1, 1952, and grew up on the family cotton and sorghum farm near Thrall. She writes:

"One might wonder how some seeds of interest in geology might have been planted in someone raised on the rather unexciting black soil of the Taylor Group. But somehow they were. Maybe it was those terrace gravels that here and there broke the monotony (and posed a significant challenge to the cotton chopper trying to keep her hoe sharp). Or perhaps it was those really strange big shells (*Exogyra ponderosa*) that weathered out of the marl. Or possibly those shiny gold rocks (pyrite) that glistened on top of the heaps of cuttings from the shallow wells drilled down in the pasture caught a little girl's eye.

"That the petroleum industry lay in my future may have had a somewhat stronger foretelling. How many seven-year-old girls play cable tool drilling? The sock dolls that my grandmother made for my brother and me were our roughnecks! True to real life, they lost a few appendages along the way, and needless to say, we wore out several 'crews'."

Bonnie entered the University of Texas down the road in Austin as a chemistry major, but it only took one intro geology course to set her on her path. She received her B.S. degree in 1974 with highest honors. She was elected to Phi Beta Kappa, received several departmental scholarships and recognitions, and was a member of Phi Beta Phi. She remained in Austin, working for the Bureau of Economic Geology while she worked on her Master's degree, which she received in 1979. Her thesis work, on the San Miguel Formation in Southwest Texas, was presented at the 1979 GCAGS - GCSSEPM meeting and published by the Bureau as RI 107.

She remained at the Bureau until 1981, conducting regional subsurface studies of the Wilcox and Frio for the Gulf Coast geopressured geothermal project. At the end of 1981, Bonnie moved to San Antonio to take a position with Placid Oil Company as explo-

ration geologist. There she worked on West Texas plays and on the Smackover of East Texas. In 1984, after Placid's exploration office in San Antonio closed, she worked at Valero Producing Company, concentrating on the Smackover of south Arkansas and the Wilcox of Louisiana.

Since 1986 she has worked at Venus Oil Company (now Venus Exploration, Inc.) as geologist and Senior Explorationist. She has been working in the Expanded Yegua Trend of the Texas Gulf Coast, playing a key role in the prospect generation that led to the discovery of Vidor Ames field in Orange County, Texas. She has also conceived and carried out a significant trend exploration program in West Texas.

Bonnie Weise has been very active in professional affairs throughout her career. She joined the South Texas Geological Society and served as its President in 1983-1984. Since that time she has helped the local society in many committees, including Scholarship, Research Grant and Program Committees, and served as Poster Chairman for the Austin Chalk Symposium in 1991. She has also been a member of the San Antonio Geophysical Society. She is a member of SEPM, AAPG, the Houston Geological Society, the West Texas Geological Society, and Permian Basin Section of SEPM. She has served as a Delegate to the AAPG House of Delegates in 1989-1992 and from 1996 on. She was certified by SIPES, and remains an associate of that organization.

Bonnie began her work for the Gulf Coast Section of SEPM in 1984, when Don Bebout called her and said he needed some help in finding a Business Representative in the San Antonio area. She relates:

"He asked if I might consider taking on the duties for a while. I said well, yes, I guess I could help out a little. So I joined GCSSEPM then, and here I am 13 years later, still doing my duties..."

In addition to representing the GCSSEPM in San Antonio, she

has served as Vice-General Chairman for the joint GCAGS-GCSSEPM Conventions held in San Antonio in 1987 and in 1996. From this position, she was in charge of all GCSSEPM-related events, working closely with the GCSSEPM President and the Technical Program Chairman, the Editor, and the Awards and Judging chairman. She served as Poster Session Chairman for the 1984 and 1989 Annual Meetings of AAPG and SEPM that were held in San Antonio.

It has been my good fortune to work with Bonnie at Venus Exploration for the last eleven years, and to collaborate on the 1996 GCAGS - GCSSEPM Convention. She is both talented and conscientious in all her undertakings. Her positive attitude and enthusiasm for geology, exploration and professional society affairs are infectious and have made a lot of worthwhile things happen. I think I speak for every geologist in San Antonio in saying "Thank You", and in wishing her many more years of effective and successful service.

Thomas E. Ewing

Past Recipients

Distinguished Service Award

Gulf Coast Association of Geological Societies

R. E. Boyer (1982)
P. B. Souders (1982)
B. C. Tucker (1982)
none awarded (1983)
A. T. Green, Jr. (1984)
Dewitt C. Van Sieten (1984)
C. E. Harrison (1985)
Raymond W. Stephens (1985)
none awarded (1986)
none awarded (1987)
none awarded (1988)
H. G. Collier, Jr. (1989)
R. B. Seigert (1989)
C. J. Corona (1990)
R. W. Sabaté (1990)
C. C. Baker (1991)

G. A. "Jerry" Cooley (1991)
S. Chuber (1991)
C. R. Noll (1992)
J. H. Hefner (1992)
J. G. Samuels (1992)
T. E. Ewing (1993)
W. R. Payne (1993)
E. G. Wermund (1993)
D. L. Smith (1993)
D. E. Pope (1994)
Duncan Goldthwaite (1995)
Howard W. Kiatta (1995)
Carlo C. Christina (1996)
M. R. "Bob" Douglass (1997)
John C. "Jack" Langford (1997)

Past Recipients

Distinguished Service Award

Gulf Coast Section of SEPM

Michael J. Nault (1988)
Richard P. Zingula (1988)
Thomas H. Fett (1989)
Dennis Joseph Greig (1989)
Bob F. Perkins (1991)
Sheila C. Barnette (1992)
C. Clarence Albers (1993)

David T. Dockery III (1993)
Nolan G. Shaw (1994)
Arthur S. Waterman (1995)
Denise M. Butler-Ford (1996)
Edward B. Picou, Jr. (1997)
Bonnie R. Weise (1997)

Honorary Membership

Gulf Coast Association of Geological Societies

Arnold H. Bouma



Arnold H. Bouma, born in Groningen, the Netherlands, on September 5, 1932, has been associated with educational institutions during the major part of his professional career. He obtained his bachelor's degree in Geology at the State University of Groninger in 1956 and his masters degree at the University of Utrecht in 1959. Studying under Ph. H. Kuenen, D. J. Doeglas, and L. M. J. U. van Straaten, his research on ancient turbidites in the French Alps, led to earning a Ph.D. at Utrecht in 1961. This classic study of turbidites led to the formulation of a model for turbidites and resulted in the famous Bouma Sequence. A Fulbright post-doctoral fellowship in 1962 allowed him to work under Francis P. Shepard at the Scripps Institute of Oceanography; the resulting research piqued his interest in the study of modern sediments and was the start of an illustrious career in the comparison of modern and ancient sedimentary facies.

Arnold returned the Netherlands as an instructor at the Geological Institute at Utrecht for the period from 1963 to 1966. In 1966, Arnold and his family emigrated to the United States when he accepted a position as associate professor in geological oceanography at Texas A&M University, where he remained until 1975. He trained numerous students at A&M, many of whom now hold outstanding positions in industry, government, and academia. In 1973, he spent a semester at the Universidad Central de Venezuela, carrying out a geologic study of the sea floor between the mainland and the island of Margarita.

In 1975, he joined the U.S. Geological Survey's Pacific-Arctic Branch of Marine Geology at Menlo Park, California as a research scientist and was co-investigator of environmental studies in the Lower Cook Inlet and the Western Gulf of Alaska. In July, 1979, he was transferred to the Survey's Atlantic-Gulf of Mexico Branch as geologist-in-charge of Marine Geology and conducted extensive research on the continental slope of the Gulf of Mexico. In July, 1981, Arnold joined Gulf Research and Development Company's Exploration and Production Division as Senior Scientist, later assuming several responsible positions before returning to academia

in 1988, when he accepted an endowed chair, the McCord Chair in Petroleum-Related Geology, at Louisiana State University.

Arnold is recognized internationally as an authority on submarine fans, both modern and ancient. He has been co-chief and chief scientist on several oceanographic cruises and served as Sedimentologist and Co-Chief Scientist on Legs 31 and 96 of the Deep Sea Drilling Project, respectively. His list of honors is extensive, it includes receiving the Shepard Award for Excellence in Marine Geology from the SEPM (1982), GCAGS Outstanding Educator Award (1992), editor-in-chief of *Geo-Marine Letters*, membership on editorial boards of several professional journals, organizing many short courses and symposia for professional and industrial organizations, and serving as a member of numerous committees and boards of both local and national agencies. In 1995, Arnold served as Chairman of the GCAGS technical program committee in Baton Rouge, Louisiana. He is a member of some ten professional and academic societies (AAPG, SEPM, GCAGS, IAS, HGS, BRGS, etc.) and has been named in *Who's Who in America* and *Who's Who in the South and Southwest*. He has authored two books and edited six, and he has published more than 180 scientific papers. Arnold also holds the record for the number of titles (30) in the GCAGS *Transactions*, including full papers, abstracts, and poster presentations.

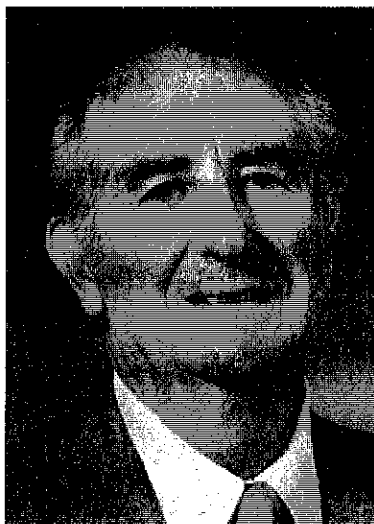
With all of his honors, however, his love of teaching and respect for students has remained steadfast. I can clearly remember when, in 1958, as a graduate student working on modern sediments, I wrote to him requesting guidance on some of the studies I was conducting. He not only responded through extensive correspondence but took the time to advise me and provide the encouragement that is so valuable to a student. Arnold Bouma has thrived on the educational aspects of his career, and he continues to interest young and old alike in looking into the secrets of sedimentary geology. His extensive research in Gulf Coast sedimentology is truly worthy of Honorary Membership in the Gulf Coast Association of Geological Societies.

James M. Coleman

Honorary Membership

Gulf Coast Association of Geological Societies

Carlo C. Christina



Carlo C. Christina was born September 28, 1929, in New Orleans, Louisiana. He grew up in that city and later attended Louisiana State University, where he earned a Bachelor of Science degree in 1951. After graduation he served as an electronics officer in the U. S. Air Force and was a First Lieutenant when honorably discharged in 1954.

Carlo subsequently began his oil patch career as a geophysical computer specialist with Western Geophysical Company. In 1955 he moved to Southern Natural Gas Company, where he was involved in the exploration and development of several large oil and gas fields in Louisiana and Mississippi. Carlo was District Geologist when he left to join the partnership of John Bricker and Lewis Lohman in 1961. This partnership evolved into Exchange Oil and Gas Company, and Carlo became a Senior Vice President and a member of the Board of Directors. In 1977 Georgia Pacific Corporation acquired Exchange. During Carlo's sixteen years at Exchange, the company participated in over 500 exploratory and development wells that found significant reserves in the Gulf Coast region.

Carlo joined Martin Exploration Company from 1977-80 as Senior Vice President of Exploration. He helped guide the company's exploration program in south Louisiana's Tuscaloosa Trend. In 1979 he co-authored a paper titled "The Tuscaloosa Trend of South Central Louisiana" and was awarded third place in the best paper contest at the GCAGS convention in San Antonio, Texas.

In 1980 Carlo joined with Lawrence G. Ringham to form C&R Exploration, Inc. This partnership found several Tuscaloosa, Miocene, and Frio fields in Louisiana and Mississippi. Carlo retired in 1994 but remains active in several professional and academic organizations.

His contributions to GCAGS began in 1988 when he organized and chaired the first GCAGS Contributions Committee, whose objective was to solicit financial support from operators and service companies. The committee's success resulted in lowering the cost of

convention registration, allowing 35 high school teachers to get free registrations, and subsidizing other convention expenses. He served on the GCAGS Board in 1988-89 and is the Chairman of the Financial Support Committee for the 1997 New Orleans GCAGS convention. He received the Distinguished Service Award from GCAGS in 1996.

Carlo has been active in the New Orleans Geological Society since joining in 1955. He has served as Vice President (1987), President-elect and President (1988-89), as well as chairman of several committees. In 1991 NOGS awarded him an Honorary Life Membership. Carlo is also an active member of SIPES.

He joined the AAPG in 1958 and is a member of the DPA (CPG #1337). Carlo was a Delegate for nine years between 1963-1981. He served as Chairman of the All Convention Luncheon in 1976, the Restaurant Guide Committee in 1985, the DPA/ DEG Luncheon in 1993, as well as being a member of numerous other committees.

Carlo's devotion to Louisiana State University began in his college days as a member of the National "L" Club for track (1949-51). He has served as President of the Geology Alumni Association (1962), Vice President and President of the Jefferson Parish Alumni Association (1972-74), Chairman of the Jefferson Parish Alumni Fund (1972-73), founding Chairman of the Geology Endowment (1975-78), member of the LSU Foundation (1974 - present), and member of the Basic Science Development Council (1990 - present). He also organized a senior-level course for geology students to expose them to the operations of the oil and gas business.

Carlo and his wife Beverly are the parents of three sons and have five grandchildren. Beverly is a former President of the New Orleans Geological Auxiliary and has chaired or been a member of many AAPG and GCAGS convention spouse activities.

His many friends and business associates join me in congratulating Carlo on this most deserved honor from GCAGS.

George D. Severson

Honorary Membership

Gulf Coast Association of Geological Societies

George N. His



George N. His was born in Plainfield, New Jersey in 1927. At the age of nine, he started collecting rocks and minerals from the trap rock quarries near his home in the Watchung Mountains. By the time he entered high school, he was roaming all over New Jersey on his bicycle collecting mineral specimens and visiting such places as the famous Franklin Furnace mine with its vast array of exotic minerals and the South Jersey clay pits with their abundant marcasite deposits.

He graduated from Rutgers University in 1952 where he earned his B.S. in Geology. While at Rutgers, he was President of the Student Geology Club, student preparator for the university geology museum and he also became the youngest ever Vice President of the New Jersey Mineralogical Society.

In 1954, after serving two years in the U.S. Army (11th Airborne Division), and having worked two years in northern British Columbia for Pacific Petroleum Ltd., George moved to San Antonio. During the years 1954-1960, he worked as an exploration geologist for Standard Oil Company of Texas in their San Antonio office and briefly in Gainesville, Texas, in production geology. In 1960, Standard closed their San Antonio office and George joined Edman R. Zink in forming the consulting geology partnership of Zink and His, which in 1967 became Zink, His and Joyce (with the addition of their friend J.G. "Bub" Joyce.)

Soon after forming Zink, His and Joyce, Henry W. Sebesta, Jr. (an oil and gas attorney) joined with Zink and His to form Hedge Oil Company and the three began drilling and operating their own wells. This partnership was later expanded to include Bob Hilty, another Standard of Texas geologist friend. Hedge Oil Company's first discovery was one of George's prospects in Zapata County, Texas; the Los Ovejas Field. The drilling and completing of these 1500' Rosenberg and Yegua Sand wells taught them the business of managing production as independents. The partnerships of Hedge Oil Company and Zink, His and Joyce were amicably dissolved in 1975. The latter part of 1975, George moved to the Milam Building in downtown San Antonio and formed Petrolero Corporation with the

Hixon Family. Edward M. Warren, Henry W. Sebesta, Jr. and Alvin L. Schultz joined George at Petrolero. George is currently Chairman of the Board of Petrolero Corporation.

George served as Treasurer of the South Texas Geological Society in 1972; in 1973 was elected Vice President and in 1974 he served as President of the organization. In 1975, George asked for permission from the STGS to organize a scholarship fund under the auspicious of the STGS. It was approved and with substantial gifts from M.O. Turner and John Teagle the Scholarship Fund "got off the ground." George served as Chairman of the Scholarship Fund for twenty years before he resigned his position in 1995.

In 1978, George became General Chairman of the 1979 GCAGS Convention in San Antonio. The convention was a huge success and also very profitable. More recently, he served as Chairman of the Crisis Committee at the 1996 GCAGS Convention also held in San Antonio.

George joined the AAPG in 1957 and served as AAPG Membership Committeeman from 1981 to 1984.

For the past number of years, outside of his professional life, George has served as a Trustee of the San Antonio Museum Association and a Trustee of the San Antonio Arts Institute. He has also been Chairman of the Board of the Good Samaritan Center. Among his other interests is his love of coin collecting and he is a Fellow of the Royal Numismatic Society of London. George is presently a volunteer consultant on Ancient Roman Numismatics to the Department of Ancient Art at the San Antonio Museum of Art. His project there consist of assisting the department in organizing and cataloguing of a very extensive collection of gold, silver and bronze Roman Republican Imperial and Provincial coins which were donated to the museum a number of years ago.

Last year, George was on the Castle Hills Mayor's Long Term Planning Committee to review and update the City of Castle Hills Master Plan for development and maintenance of that city. George is also active in his Episcopal church where he has been Senior Warden twice and has served on numerous committees; most recently being

the Chairman of the Music Ministry.

George has exemplified unselfish dedication to the geology profession. His efforts in organizing the Scholarship Fund for the South Texas Geological Society took lots of time and hard work and the Fund has assisted many college students. Additionally, George is recognized in San Antonio as a leader in many civic organizations

ranging from museums to his church. He maintains the highest moral and professional standards in the profession of geology as well as in his personal life. George is a "giver" and not a "taker" and it would be difficult to find a more qualified person to receive Honorary Membership in GCAGS.

Alvin L. Schultz

Honorary Membership

Gulf Coast Association of Geological Societies

David E. Pope



Any individual who has ever served in any official capacity for the Gulf Coast Association of Geological Societies, the Baton Rouge Geological Society or for that matter, any of the member societies of the GCAGS will doubtless be aware of the valuable contributions made by David E. Pope, affectionately called "Dave" by most of his friends and colleagues, to every organization he has been involved with in various capacities. Dave was born in Forrest City, Arkansas, and graduated from Forrest City High School in 1938. He then attended Louisiana State University on a football scholarship, but his university career was interrupted when he was commissioned as a Second Lieutenant in 1942 to serve in the U.S. Army during World War II. He returned to LSU in 1946 and received his B.S. degree in 1947 and an M.S. degree in 1948 with specialization in micropaleontology. He was a student of H.V. Howe, R.J. Russell, H.N. Fisk, and C.J. Roy.

During his career in the U.S. Army, Dave advanced to the rank of Captain and was awarded the Silver Star twice, Purple Heart, the Mediterranean Theater Medal with three battle stars, and the Combat Infantryman's Badge. Dave graduated from the Infantry School (1943), the U.S. Army Counterintelligence School (1955), the 4th (now 5th) U.S. Army Military Intelligence School (1962), and the U.S. Army Command and General Staff College (1967). He separated from active duty in 1946 but continued his military career in the Army Reserves and retired as Lieutenant Colonel in 1968. He is a life member of the Reserve Officers Association and the Military Order of World Wars (MOWW) and is presently the Vice Commander/Commander-elect of the Baton Rouge Chapter of MOWW.

Dave began his career as a biostratigrapher and paleontologist with Union Producing Company in 1948 and worked with them for nineteen years in Houston, New Orleans, and Lafayette and retired in 1967 as District Paleontologist. He worked as a consultant from 1967 to 1975 at which time he joined the Louisiana Geological Survey, in Baton Rouge, where he currently is a Senior Research Geologist. His total consulting career actually spanned some 32

years (1954-86). His first paleo client was the renowned New Orleans consultant and AAPG Powers Medalist, Gordon Atwater.

The only person to serve as President of both GCAGS (1985-86) and the Gulf Coast Section of SEPM (1959-60), Dave has been a very active member of these organizations as well as the AAPG, AIPG, and local societies. He co-founded the present BRGS in 1979 along with Harry Roland. He has served BRGS as President, Vice President, chairman of numerous committees, and was awarded Honorary Membership in 1991. He continues to be a main motivating force behind BRGS today. The highly successful 1995 GCAGS Convention in Baton Rouge was spearheaded by David Pope who was the General Chairman. This convention ranks financially second only to the much larger 1991 Houston meeting.

Dave attended the first GCAGS Convention while working in New Orleans in 1951, and has made most of them since then. He has served GCAGS in various capacities as Acting Secretary (1956-57), Vice President (1984-85), President (1985-86), assisted in editing various GCAGS Transactions, served on various Committees, chaired technical sessions, judged papers, and has published four papers in the Transactions, including the history of the GCAGS in 1991. Dave has been the GCAGS Historian since 1983. He has not missed a board meeting since 1981, as Historian or representing BRGS, or both. He is a charter member of the Gulf Coast Section of SEPM (1953), was President in 1959-60, received Honorary Membership in 1987, and has served the GCSSEPM in many of the same ways as he has served GCAGS.

The AAPG and AIPG has also benefitted from Dave's willingness and interest in involving himself in the various geological societies. He has been a member of the AAPG since 1949 and AIPG since 1985 and has been a delegate or alternate to the AAPG House of Delegates since 1981. He is an AAPG Certified Petroleum Geologist, and a contributor to the COSUNA Gulf Coast Correlation Chart (1988). Dave has served AAPG as a member on the Committee for the Preservation of Cores and Samples (1957-60), and has been on the membership Committee since 1988. He is the

Vice President and President-elect of the Louisiana Chapter of AIPG (1997-98) and will be the Vice General Chairman for the 1998 AIPG Convention to be held in Baton Rouge. Dave has been a member of the New Orleans Geological Society since 1949, serving as Secretary (1956-57), Vice President and Program Chairman (1961-62) and has served on various committees.

Dave has been married to Alice Duke Akins of Baton Rouge since 1990. His two sons, David Brian and Mark Alan, live in Lafayette and they were born when he was married to Dorothy

Salario, now deceased.

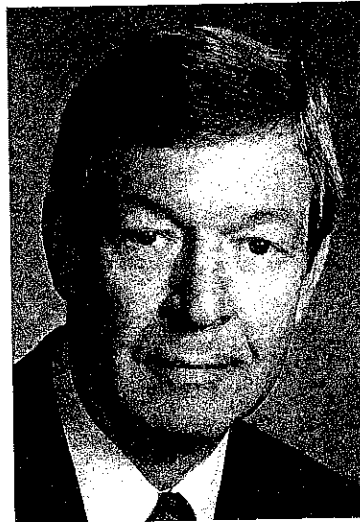
Dave's biography is essentially a history of selfless and dedicated service to GCAGS, BRGS, and many other professional organizations. He has been president and/or vice president of seven regional or local geoscience societies and is honorary member of two of them. It is doubtful whether one could find anyone who has contributed more to so many professional organizations over the past 40 years, and, so it is only very appropriate that David E. Pope should receive Honorary Membership in GCAGS.

Chacko J. John

Honorary Membership

Gulf Coast Association of Geological Societies

Dan L. Smith



Dan Smith started a professional lifestyle as an Eagle Scout and, in keeping with that level of excellence, he has exhibited throughout his working life a strong emphasis on dedicated service. Everyone with whom Dan has worked can attest to Dan's organization and personal drive from his early days at Amoco where I had the opportunity to view his strong work ethic; and through his career as an independent with the development of Houston-based Texoil to a mid-sized aggressive exploration team, culminating in his current position at The Meridian Resource Corporation as its vice president for exploration.

Dan is responsible during his early career for numerous discoveries in South Louisiana. Currently, The Meridian Resource Corporation is experiencing excellent results under his exploration guidance by utilizing 3-D seismic with Dan's keen blend of geological expertise with geophysics. His early discoveries included Buras, Kenner, Pointe à la Haché, Diamond, Bayou Villars, and Dorseyville, and his more recent exploration efforts span both South Louisiana and the Texas Gulf Coast. During that time he has served professionally by chairing numerous committees in GCAGS, AAPG, HGS and SIPES, and as president of the Houston Geological Society in 1987-88 and Chairman of the AAPG 1997-98 House of Delegates. We co-chaired the 1991 GCAGS Convention in Houston, where I was able to view the true professionalism of this outstanding geologist. Dan has kept his Gulf Coast and other colleagues current on state registration matters. He was the DPA vice chairman for

the 1995 Houston AAPG convention and received the Best Paper Award during the same meeting. He has always shown particular strength planning, organizing and presenting technical programs. As typical of overachievers, he always is available to serve in spite of a busy schedule and many long weekends.

Dan Smith has been actively involved as a Houston AAPG delegate almost continuously since 1982, served as its foreman in 1985, and has recently chaired the AAPG Constitution and By-Laws Committee, serving it from 1992-97. In 1995-97 he chaired the AAPG House of Delegates Nominating and Election Committee. Dan has received the HGS Distinguished Service and Honorary Life awards and the GCAGS Distinguished Service Award and is currently chairing the GCAGS Committee on Conventions as well as serving on other GCAGS committees over the years.

In his early career after graduating from The University of Texas at Austin in 1958, Dan set up Amoco's first practical computer geological study which was the of the Upper Cretaceous Sand Trend in South Texas. In both his professional and career endeavors, Dan continues to be a leader of technical advances in our science. Through these years he and his lovely wife, Laura, have raised three beautiful daughters and a fine son. His entire life has been one of excellence and achievement. Dan by example and direction has kept his fellow geologists of the GCAGS at a high professional level and is truly deserving of this recognition.

C.R. "Chuck" Knoll

Past Recipient

Distinguished Honorary Membership

Gulf Coast Association of Geological Societies

D. R. Boyd (1982)
J. Braunstein (1982)
M. T. Halbouty (1982)
F. W. Harrison, Jr. (1982)
H. N. Hickey (1982)
L. H. Meltzer (1982)
S. J. Lysinger (1983)
J. O. Lewis (1983)
E. C. Roy, Jr. (1983)
F. L. Smith, Jr. (1983)
P. M. Strunk (1983)
R. J. LeBlanc, Sr. (1984)
W. R. Paine (1984)
M. O. Turner (1984)
W. L. Fisher (1986)
C. L. Sartor (1986)
J. J. Amoruso (1987)
W. L. Stapp (1988)

J. A. Gilreath (1989)
R. E. Boyer (1990)
J. A. Hartman (1990)
T. H. Philpott (1990)
none awarded (1991)
none awarded (1992)
G. A. Cooley (1993)
M. G. Frey (1993)
P. G. Gray (1993)
J. T. Palmer (1993)
T. D. Barber (1994)
D. F. Tobin (1994)
Edward B. Picou, Jr. (1995)
George D. Severson (1996)
Arnold H. Bouma (1997)
Carlo C. Christina (1997)
David E. Pope (1997)
Dan L. Smith (1997)

Past Recipient Distinguished Honorary Membership Gulf Coast Section SEPM

Charles G. Ventress (1989)

Past Recipient Honorary Membership Gulf Coast Section SEPM

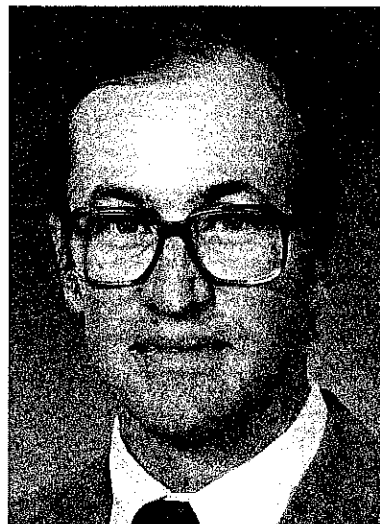
Ester Applin (1964)
Alva C. Ellisor (1964)
Marcus A. Hanna (1964)
Henry V. Howe (1964)
Hedwig T. Kniker (1964)
Winnie McGamery (1964)
John R. Sandidge (1964)
J. B. Garrett, Jr. (1965)
E. H. Rainwater (1966)
Henry Bronislaw Stenzel (1971)
Jules Braunstein (1973)
Grover E. Murray (1973)
Harold V. Andersen (1975)
Lyman D. Toulmin (1975)
Doris M. Curtis (1977)
Stuart A. Levinson (1978)
Fred L. Smith, Jr. (1978)
Charles W. Stuckey (1978)
William R. Paine (1980)

Frank E. Lozo, Jr. (1981)
Gene B. Martin (1984)
Bob F. Perkins (1984)
Edward B. Picou, Jr. (1984)
Claude M. Quigley, Jr. (1986)
William P. S. Ventress (1986)
Don G. Bebout (1987)
David E. Pope (1987)
Emmett Ray Adams (1989)
Jack O. Colle (1989)
John B. Dunlap, Jr. (1989)
C. Clarence Albers (1990)
Ben J. Petrussek (1990)
Ernest A. Mancini (1991)
James M. Coleman (1992)
Edward McFarlan, Jr. (1994)
Arnold H. Bouma (1995)
Harry H. Roberts (1996)

Outstanding Educator Award

Gulf Coast Association of Geological Societies

Jeffrey S. Hanor



Jeff Hanor's approach to his role as educator goes well beyond dedication to performance in the classroom. Jeff has long recognized that what is learned in the classroom should be immediately applicable to the everyday problems that earth scientists encounter. One of his students characterizes this as making "accessible explanations of complex chemical phenomena". Jeff always looks for local and regional examples of these chemical phenomena to illustrate his classroom activities, blurring the boundaries between teaching and research — two activities that naturally feed into one another. With each teaching opportunity comes a new opportunity for Jeff to learn something new himself as he brings new materials into the classroom. Jeff's special skills include a charming sense of humor and a gift for producing artistic sketches, both of which he uses liberally in the classroom. My first encounter with these classroom techniques was shortly after my arrival at LSU as a new assistant professor (having just been hired by Jeff who was then Department Chairman). He was preparing a new lecture on the effects of heat-flow on groundwater circulation and the centerpiece was a sketch adapted from a 15th century woodcut print. Cherubic figures directed great flames and fluid currents within the Earth. More recently Jeff has used the "Star of Gonzales", a large crystal of rock salt, with the assertion that it is a valuable diamond, or the exploits of Connate the Barbarian in illustrations on subsurface brines. Another student comment expresses this skill as "a wicked artistic talent for caricatures and cartoons which make his lectures entertaining as well as informative".

In the late 1960s the LSU Geology Department was selected for a National Science Foundation Centers of Excellence award which recognized both past achievements and future potential of the Department. Jeff Hanor came to LSU in 1970 as one of several new faculty that would develop this potential. His impact on LSU geology was immediate and in 1975 he was appointed Chairman of the Department for three years. Later his administrative duties included four tours as Graduate Advisor. In 1994 Jeff was appointed to the Charles L. Jones Professorship based on his fine record of teaching,

research, and service at LSU.

Jeff was educated at Carlton College where he was elected to the Phi Beta Kappa and Sigma Xi Honor Societies. He received a Ph.D. from Harvard University before going to Scripps Institute of Oceanography for four years as a National Science Foundation Post-doctoral Fellow and Instructor.

Jeff has won numerous teaching awards during his twenty-seven years at LSU. Among these are the College of Basic Sciences Graduate Teaching Award in 1986, the LSU Student Government Award for Undergraduate Teaching in 1989, and LSU's H.M. Cotton Award in 1992. The Hydrogeology Division of the Geological Society of America will honor him with the Birdsall/Dreiss Distinguished Lectureship for 1997-98.

One very important measure of the quality of Jeff's teaching program is found in the success of his former students. He has served as major advisor to over 40 students at LSU. Five have gone on to University positions, including Lynn Walters, Professor and Presidential Young Investigator at the University of Michigan, and Ron Stoessel, Professor at the University of New Orleans. Others have gone on to careers in government, including Pat Shanks, a recent recipient of the prestigious USGS G.K. Gilbert Fellowship. And many now have productive careers in the environmental and petroleum industry.

Jeff's students have always been encouraged to develop their scholarship. Most have published major parts of their theses and dissertations. These include Jeff's GCAGS "best papers" with Lee Esch in 1995, with Brent Bray in 1990, and with Audrey Workman in 1985. Jeff's other notable student papers include those with Kathy McManus in the 1993 *Geology*, with Kathy Duchac in the 1990 *Journal of Geology*, with Vishnu Ranganathan in the 1989 *Journal of Hydrology*, with Kevin Howard in the 1987 *Journal of Economic Geology*, and with Ginny Colten in the 1984 *Journal of Chemical Geology*.

Jeff has served for a number of years on the National Science Foundation's Earth Sciences Review Panel, NASA's Proposal

Review Panel, and the Editorial Board of Economic Geology, as well as positions on other national committees. His personal scholarship has had an important impact on the geosciences. Early work on the geochemistry of barite and carbonate cements was highly regarded and still frequently cited. His 1988 SEPM book, *Origin and Migration of Subsurface Sedimentary Brines*, is a widely cited work, as are his 1987 Nature paper on thermohaline convection, his 1990 Nature paper on horizontal flow of pore fluids, his 1992 Geological Society of London paper on composition of waters in sedimentary basins, and his 1995 Environmental Geology paper on the subsurface geology of hazardous waste landfills. This later body of work established Jeff as an international authority in chemical hydrogeology and certainly led to his selection as the 1992 Keynote speaker at

the Geological Society of London's conference on North Sea formation waters and 1997-98 GSA Lecturer in Hydrogeology.

For twenty-seven years Jeff Hanor has inspired students with his excitement about geology and his unique ability to bring science alive in the classroom. He has a legacy of successful students and personal scholarship that few of us will ever match. It is very fitting that he is being honored with the GCAGS Outstanding Educator Award for 1997.

Gary Byerly

Outstanding Educator Award

Gulf Coast Association of Geological Societies

Donald H. Kupfer



While Donald Kupfer is most famous for his work in Gulf Coast salt domes, his interests vary widely, from fault mapping (San Andreas and Death Valley faults, and in New Zealand, Turkey, Scotland, Guatemala, and Alaska) to mining geology (molybdenum, boron, and several others) to the history of the oldest oil field (Florence) in Colorado.

Don Kupfer is a native of California. He received his geological education at Cal Tech (BS, 1940), UCLA (MA, 1942), and Yale (M.S. and Ph.D., 1951). He had decided that he wanted to be a teacher, but despite his outstanding education, he felt that he needed more preparation to teach. So, he worked for ten years as a field geologist for the USGS, under three of the Old Masters, James Guilluly, Charles A. Anderson, and Foster Hewett, from 1942 to 1955. This work was interrupted for three years during World War II, while Don served in the US naval Reserve. During one of his trips to USGS headquarters, he met and married another USGS employee, Romaine Littlefield. They now have two married children. Romaine has a bachelors degree in geology and a masters in geography.

At a GSA meeting in Los Angeles, Don was interviewed by Drs. Adolph Sandberg, Harold V. Andersen, and Grover E. Murray of Louisiana State University. This resulted in Don reporting for duty shortly thereafter in 1955 to teach at LSU. Chairman "Sandy" Sandberg promptly appointed Don as Director of the LSU summer geology camp, located south of Colorado Springs. Don continued in this position until 1959, and maintained his association with the camp until 1976. There he earned the title of "Roadrunner" while running the outcrops. He was introduced to the intricacies Louisiana field geology by Clarence O. "Clay" Durham, former director of the LSU School of Geology. Meanwhile, he was teaching both field geology and structural geology on the Baton Rouge campus. In fact, he taught ten different undergraduate courses and many graduate seminars over a span of 25 years, until his retirement in 1980. One of his most successful and continuing seminars was on geologic map interpretation.

Also, shortly after his arrival at LSU, Gordon Atwater, then a Visiting Professor at LSU, suggested that Don study salt domes as seen in salt mines. Gordon took Don to three operating mines (Jefferson, Avery, Weeks), and thus established Don's main research effort thereafter. Since that time, Don has published about sixty papers, most of them on Gulf Coast salt domes, including six papers for GCAGS, four for AAPG, and others elsewhere including GSA, and has published a dozen field trip guides on the subject, including one with Brian Lock of the University of SW Louisiana in 1995. He has visited and studied salt domes or salt deposits in England, Germany, Poland, Romaina, Spain, Israel, Iran, Canada, and Mexico, as well as many parts of the United States. He has participated in salt symposia in New Zealand; Prugue, Czechoslovakia; Hamburg, Germany; and a number of US locations. Don has served as consultant for salt mining companies and geological engineers for thirty years (1964-95). Beginning in 1964, Don has usually led one or two field trips annually to coastal Louisiana's Five Islands. He is recognized as one of the world's foremost authorities on the structures and growth of Gulf Coast salt domes, salt mining and safety, the effect of salt on the surrounding sediments, and Gulf Coast geosynclinal structure and sedimentation.

Don is a member of several professional organizations, and among his many honors and accomplishments over the years are Vice Chairman of the Southeastern Section of GSA (1953-54), National Science Foundation Senior Post Doctoral Fellowship to New Zealand (1962-63), President of the local chapter of Sigma Xi (1967-70), President of the Southeastern Section of Geology Teachers (1971-74), organizer of a regional NAGT conference on the use of computers for geology teachers (1972), was elected first honorary member of the Baton Rouge Geological Society (1980), and was elected AAAS Fellow (1982). In the summer of 1966 (Turkey), and again in 1967 (Pakistan), when CENTO (Central Treaty Organization) decided to fight the "Brian Drain" by bringing US and British teachers to the "students" instead of the reverse, Don was honored to be one of three professors chosen (two from the US,

one from England) to inaugurate a special course in Anglo-American field geology methods for twenty selected young professionals from Turkey, Pakistan, and Iran. This was quite an honor. In 1974, Don received the GCAGS Best Paper Award for his "Shear Zones in the Gulf Coast Salt Delineate Spines of Movement." This paper also won the A.I. Levorsen Memorial Award — given annually by GCAGS since 1966 for creative ideas in oil and gas exploration — emphasizing the practical and useful aspect of Don's work. Most recently, the 1995 publication on salt domes of the Gulf Coast, by Tom Fails, Gerry O'Brien, and Jim Hartman, was published by the Houston and New Orleans Geological societies and dedicated to Don Kupfer and Stanley Say in recognition of their outstanding contributions to the understanding of Gulf Coast Salt domes.

Although Don has been retired since 1980, has remained active in publishing papers, attending conventions, and leading field trips (one in 1995 for GCAGS and one for GSA). He still receives accolades from his former students at conventions, and they well

remember that they could expect the unexpected on Don's exams. He made them use their reasoning powers to the maximum.

Don and Romaine moved to Canon City, Colorado last year and he has become interested in the oil history of the area. He continues to lead field trips for the Rocky Mountain Association of Geologists, the Colorado Historical Society, and local citizens. He recently taught a non-credit course for the local Senior Citizen's "Mini-College" on this oil history.

So, I will not be the least bit surprised if someday — down the road — I hear that Don Kupfer is teaching Saint Peter the geology of the universe, and looking for salt domes in the sky.

Donald H. Kupfer is truly most deserving of the GCAGS Outstanding Educator Award for his everlasting devotion to teaching, his contributions to the science of geology and the understanding of Gulf Coast salt domes and the attending stratigraphy, not only for his immediate audience, but also for geologists around the world.

David E. Pope

Outstanding Educator Award

Gulf Coast Association of Geological Societies

William C. Ward



Each semester during the last week of classes, our students fill out evaluation forms. It is their chance to grade the professors. Bill Ward once suggested that a more appropriate evaluation would be given by students five years or more after the class is over, allowing the students time to fit the course within a broader view of their lives. By either standard, William C. Ward gets As. His contributions to students — and his colleagues and community — have had staying power, and the affection and respect felt for him has not diminished with time.

Bill joined the faculty at the University of New Orleans in 1970, where he remained until retiring in 1995. In his 25 years of service, Bill supervised 37 graduate theses. He taught courses in sedimentation and sedimentary petrology, but his first love is carbonate petrology. Bill's Ph.D. supervisor at Rice University, James Lee Wilson, was ahead of his time in developing concepts of carbonate stratigraphy. Through Bill's carbonate courses, students at UNO were exposed early to concepts that later became the basis for carbonate sequence stratigraphy and cyclic stratigraphy. Bill's work in carbonates and sandstones has been both international and internationally recognized. Bill and his students have worked in northern Mexico, the Yucatan, Egypt, Puerto Rico, Mallorca, Libya, as well as several places in the U.S. Gulf Coast.

Bill's contributions have extended beyond the classroom and research. He helped start and advised student chapters of AAPG and SGE, including initiating the faculty roast. He established and published a Departmental Alumni Newsletter. He has served as a mentor for young faculty and a source of wisdom for the Department. Bill has led numerous field trips to Northern Mexico and the Yucatan, where he and his friend, Bill Back, did much of the important early work on mixing-zone diagenesis. He worked on many convention committees for GCAGS, GSA, and AAPG-SEPM meetings in New Orleans. Perhaps most importantly, Bill is a great father and

husband. His wife Kathy is an excellent science teacher, with a Ph.D. in education. His daughter Laura is an environmental scientist in Wisconsin. Daughter Diane inherited Bill's artistic abilities, completing a degree in fine arts. And son Bruce is continuing his father's carbonate legacy, having completed his Ph.D. in carbonate petrology at SUNY-Stony Brook.

Since his retirement, Bill has continued his research. Presently, he is working on two papers: on the dolomites of Mallorca and on the Upper Jurassic-Lowermost Cretaceous of northeastern Mexico. He has been on several trips to northeastern Mexico with James Lee Wilson, as well as a couple of trips to Mallorca to work with Luis Pomar and a trip to Puerto Rico to help Ivan Gill's Tulane grad students with field work. Bill is presently on dissertation and thesis committees at Tulane, Cal State University-Riverside, and the University of Puerto Rico.

Bill's retirement saw him returning to his roots in Texas. His home near San Antonio has become a popular spot for UNO alumni in Texas to reunite. In addition, several of his UNO colleagues made the trip to Texas to help him and Kathy celebrate their 40th wedding anniversary. The celebration was held at Floore's Country Store, where Bill and Kathy went on their first date. Present were enough well-known geologists to hold a Penrose conference — Bob Folk, Jim Wilson (in spirit; his wife stood in for him while he was out of town), Wayne Ahr, several colleagues from Bill's nine years at Humble Oil before pursuing his Ph.D., Al Weidie, his friend and colleague throughout his UNO years, and Bruce, the third Dr. Ward in the family.

Bill's ties to his scientific community, former students and colleagues, and family are indicators of the esteem in which he is widely held. It is entirely appropriate that he be awarded this 1997 GCAGS Outstanding Educator Award.

Dale H. Easley

Past Recipient

Outstanding Educator Award

Gulf Coast Association of Geological Societies

Robert R. "Bob" Berg (1991)
James M. Coleman (1991)
Brian E. Lock (1991)
Edward E. Roy, Jr. (1991)
Arnold H. Bouma (1992)
Clyde H. Moore (1992)
Carl E. Norman (1992)
Alfred E. Weidie, Jr. (1992)

William E. Galloway (1993)
William W. Craig (1994)
Harry H. Roberts (1995)
William R. Bryant (1996)
Jeffrey S. Hanor (1997)
Donald H. Kupfer (1997)
William C. Ward (1997)

1996 A.I. Levorsen Memorial Award and Third Place, 1996 Best Oral Paper Award Gulf Coast Association of Geological Societies

David J. Hall

**For: Origin and Early Development of the Gulf of Mexico Basin
Based on 15-Second Seismic in the Louisiana Shelf and Upper Slope**



David J. Hall is co-founder, Director and Chief Geophysicist for Excalibur Interpretation Company in Houston, Texas. He received a B.S. degree from Beloit College and M.S. and Ph.D. degrees from the University of Massachusetts before starting work with Gulf Research and Development in 1974. He was chief Geophysicist with Total Minatome and Senior Technical Associate at TGS-Calibre Geophysical Company before co-founding Excalibur Interpretation in 1995. He is author or co-author of more than 65 papers,

abstracts and reports on geology, geophysics and oil and gas exploration. Current primary fields of interest include salt-related and sub-salt exploration; deep structure, origin and development of the Gulf of Mexico basin; deep water exploration offshore the Gulf Coast and Nigeria; 3-D Seismic attributes and interpretation; Amplitude vs. Offset analysis; and exploration for oil and gas in Mongolia, Poland, Nigeria and Viet Nam. In addition to the 1996 Levorsen Award, recent honors and awards include: Honorable mention, best paper at the 1994 SEG National Meeting and senior author on the best paper at the 1995 AAPG National Meeting. Dr. Hall is a member of the American Association of Petroleum Geologists, Society of Exploration Geophysicists, American Geophysical Union, Houston Geological Society and the Geophysical Society of Houston.

1995 A.I. Levorsen Memorial Award Gulf Coast Association of Geological Societies Awarded to: Brian E. Lock

**For: Modern Analytical Techniques for
Fault Surface Seal Analysis: A Gulf Coast Case History**



Brian E. Lock is currently head of the Geology Department at the University of Southwestern Louisiana. His degrees are from Cambridge University, England. After completing the Ph.D., he taught at Rhodes University, South Africa, for seven and one half years and came to Louisiana in 1977. He worked on a field project in Spitsbergen as a consultant for Norske Fina before leaving Cambridge, and spent fifteen months with a small petroleum company in New Orleans in the

mid 1980s. His current research interests concern applications of sedimentology to the petroleum industry, particularly clastic diagenesis and evaporite sedimentology. He has been working with salt mining companies in South Louisiana since 1991, developing a better understanding of the geology of salt stocks as seen in the mines.

Lock has been active with the Lafayette Geological Society, of which he is a past President. He was named as Honorary Lifetime Member, earlier this year. He has served the GCAGS as General Chairman for the 1990 Annual Convention and will be President for the 1999 meeting. He was one of the first group honored by the Association as an Outstanding Educator, and received a Best Published Paper award from the GCSSEPM in 1991.

Paper presented at the 1995 GCAGS Convention.

1996 Best Paper Awards

Gulf Coast Association of Geological Societies

First Place Awarded to:

Joseph C. Fiduk, Bruce D. Trudgill, Mark G. Rowan, Paul Weimer, Peter E. Gayle, Bryant E. Korn, Ronald L. Phair, William T. Gafford, Geneva R. Roberts, Steven W. Dobbs, and Cindy K. Guu

For: Allochthonous Salt Surrounding Alaminos Canyon, Northwestern Deep Gulf of Mexico



Joseph Carl Fiduk received his bachelor ('79) and master's ('82) degree in geology from the University of Florida in Gainesville. He was hired out of school by Gulf Oil as a geophysicist during the boom and spent four years in Midland, Texas exploring the Permian Basin for oil and gas. During the same time, he went to night school and received a M.B.A. from the University of Texas in the Permian Basin in December of 1985. In August of 1986 he moved to Austin, Texas and started a Ph.D. research program at the University of Texas in Austin. His research topic was the "Plio-Pleistocene evolution of the upper continental slope in the Garden Banks and East Breaks areas". While

working on his degree, he also worked at the Texas Bureau of Economic Geology. At the Bureau he was employed to do sequence stratigraphic interpretation of 2D and 3D seismic data for various research projects. Carl finished his Ph.D. research in May of 1994. In August of 1994 he moved to Boulder, Colorado to take a position as a Research Associate in the Department of Geological Sciences at the University of Colorado. Within the Energy and Minerals Applied Research Center (EMARC) group, he spent the next two and a half years researching structural, depositional, and sequence stratigraphic problems in the Perdido fold belt.

His general research interests lie in the areas of sedimentology, salt tectonics, basin analysis, and deep marine depositional processes. Most recently he has become interested in applying ichnofacies to help solve sequence stratigraphic problems. He is currently a member of the GCSSEPM and AAPG and is an AAPG certified petroleum geologist.

Geophysical Associate with the Deepwater Exploration Group and is also responsible for acquisition and interpretation of high resolution seismic data used for geohazard assessment for exploration wells in the Gulf of Mexico. A current area of interest is the use of exploration 3D seismic data for geohazard assessment.



Bill Gafford began his geophysical career with Amoco in 1967 after receiving his B.S. degree in Mathematics from the University of Mississippi. After assignments which included computing field records and data processing, he worked for five years as an interpreter and then supervisor in the Louisiana Cretaceous and Tuscaloosa trends. For six years he supervised the land and marine geophysical field operations for Amoco's New Orleans region. Since transferring to Houston in 1989, Bill has been involved with workstation interpretation of 2D and 3D seismic data in various areas of the Gulf of Mexico. He is presently a Senior

While in New Orleans, Bill was active in the Southeastern Geophysical Society, serving as Secretary/Treasurer and President. He has been an active SEG member for 30 years, and had served on the Membership Committee and as a Section Representative. He was the Arrangements Chairman for the 57th SEG Annual International Meeting and Exposition in New Orleans in 1987. Bill is presently serving as President of the Geophysical Society of Houston. He is also a member of the Houston and New Orleans Geological Societies.

Geophysical Associate with the Deepwater Exploration Group and is also responsible for acquisition and interpretation of high resolution seismic data used for geohazard assessment for exploration wells in the Gulf of Mexico. A current area of interest is the use of exploration 3D seismic data for geohazard assessment.

While in New Orleans, Bill was active in the Southeastern Geophysical Society, serving as Secretary/Treasurer and President. He has been an active SEG member for 30 years, and had served on the Membership Committee and as a Section Representative. He was the Arrangements Chairman for the 57th SEG Annual International Meeting and Exposition in New Orleans in 1987. Bill is presently serving as President of the Geophysical Society of Houston. He is also a member of the Houston and New Orleans Geological Societies.



Mark G. Rowan received a B.S. in Biology from Cal Tech in 1976, an M.S. in stratigraphy and tectonics from Berkeley in 1982, and a Ph.D. in structure from the University of Colorado at Boulder in 1991. He spent three years at Sohio Petroleum in Denver from 1982 to 1985, then joined Geo-Logic Systems in Boulder, where he consulted for the industry and was involved with the development of cross-section restoration software (Geosec). In 1989, Mark joined Alastair Beach Associates in Glasgow, Scotland, as a consultant in structural geology, working primarily on the North Sea and offshore Norway, but including projects from throughout the world. In 1992, he returned to the University of Colorado, where he is a Research Assistant Professor

in the Energy and Minerals Applied Research Center (EMARC) and currently heads up a large industrial research consortium investigating Gulf of Mexico salt tectonics. In addition to his research, teaching, and student advising at CU, he teaches courses and consults for the petroleum industry.

The primary focus of Mark's recent research has been the three-dimensional geometry and evolution of both extensional and contractional structures and their implications for regional tectonics, basin analysis, facies development, and petroleum exploration/production. The principal tools in this research are seismic interpretation, structural restoration (both 2D and 3D), and fault analysis. Although he has had experience in deformed terranes worldwide, current projects are centered in the Gulf of Mexico and Colombia. These include: the four-dimensional growth of salt-cored contractional folds; the geometry and growth of normal fault systems; and the structure and evolution of inverted rift basins. He is author of coauthor of over 30 papers and 60 abstracts.



Bruce D. Trudgill is a Research Associate with the Energy and Minerals Applied Research Center (EMARC) at the University of Colorado in Boulder. He received his B.Sc. degree from the University of Wales at Aberystwyth in 1986. On a wave of enthusiasm he then went to Imperial College in London to work on his Ph.D. thesis based on fieldwork in the western French Alps, and seismic data analysis in the Celtic Sea basins west of Britain. His Ph.D., entitled "Field and seismic analysis of the structural inversion of sedimentary basins" was awarded in 1991. Bruce spent two years at Amerada Hess UK Ltd. as a geophysicist/structural geologist working mainly on the frontier areas west of Britain. A break from serious work took him to Nepal and India mountain climbing before he returned to Imperial College as a Post-

Doctoral Research Fellow working on the geometry, kinematics and mechanics of relay structures in the Canyonlands area of SE Utah. In 1994, Bruce moved back to the country of his birth and took up a position as a Research Associate at the University of Colorado in Boulder. His initial research project was a two year study of the Perdido fold belt in the deep Gulf of Mexico. Currently he is a Principal Investigator on a three year industry consortium funded project entitled "Salt, Faults, and Minibasins: Geometry, Evolution, & Interaction". This project involves detailed interpretation of 3D seismic data from the Gulf of Mexico and three dimensional modeling of the interaction between salt, faults and minibasin development. Bruce has published research articles on the western Alps, Celtic Sea basins, relay ramp development, fault growth and the Perdido fold belt. His main research interests are in salt tectonics and the growth of fault systems which tends to keep him tied to a workstation much of the time. However, he still takes every opportunity to take a trip out to SE Utah and examine deformation at first hand.



Paul Weimer is an associate professor in the Department of Geological Sciences at the University of Colorado at Boulder, and serves as the Director of the Energy and Minerals Applied Research Center. He received his B.A. from Pomona College (Claremont, CA) in 1978 with honors in geology. He received his M.S. in geology in 1980 from the University of Colorado at Boulder, and his Ph.D. from the University of Texas at Austin in 1989. During the summer of 1978, he worked as a geologist with Amoco Production Company (Denver, CO). From 1980 to 1984, he worked as an exploration geologist with Sohio Petroleum Company (San Francisco, CA) doing regional

exploration of the North Slope of Alaska. He worked with Mobil Oil Corporation (Dallas, TX) as a research and exploration geologist from 1988 to 1990. He co-authored five volumes: Alaskan North Slope Geology (SEPM-Pacific Section), Seismic Facies and Sedimentary Processes of Submarine Fan and Turbidite Systems (Springer-Verlag), Siliciclastic Sequence Stratigraphy (AAPG Memoir 58), Submarine Fans and Turbidite Systems (SEPM-Gulf Coast Section), and Applications of 3-D Seismic Data to Exploration and Production (AAPG Studies in Geology 42). He has authored more than 60 papers.

Paul's research interests are in applied sequence stratigraphy and basin analysis, petroleum geology of turbidite systems, 3-D seismic interpretation, and reservoir geology. He received the 1992 J. C. "Cam" Sproule Award from the AAPG. He is the 1997 President of the GCSSEPM.

Second Place awarded to:

Chip Story

For: 3-D Seismic Redevelopment of Louisiana's Tuscaloosa Trend: Port Hudson Field Case History



Chip Story holds a B.S. degree in Geological Engineering from the South Dakota School of Mines and a M.S. degree in Geophysics from the Colorado School of Mines. His career began with Amoco in 1977 with the early efforts in the Wyoming Thrust Belt. Subsequent projects included work in the Paradox Basin and Williston Basin. Project assignments starting in 1983 included work in the offshore Gulf of Mexico, in the Mobile Bay Norphlet Trend, in the Tuscaloosa Trend, and in the Hackberry

Trend. Chip is currently assigned to the International Operations Group in Amoco's Houston office where he is working on the Lihua Field in the South China Sea. His professional interests involve 3-D seismic interpretation along with workstation visualization and mapping technology.

1996 Best Poster Awards

Gulf Coast Association of Geological Societies

First Place (tie) Awarded to:

Harry H. Roberts



Harry H. Roberts received a B.S. degree in physics from Marshall University in Huntington W.VA. During his junior year he took a geology course to fulfill a science requirement and became so interested in the subject that he took additional classes as a senior. Even though his classmates were taking jobs with NASA, Harry stayed at Marshall after graduation and took all geology courses required for a B.S. degree. His teacher was Dr. James R. Wall, a new graduate of LSU who did

his graduate work under the direction of Dr. Grover Murray. A visit to LSU during the Christmas vacation of 1963 convinced Harry that Louisiana was going to be a part of his future. Dr. Adolph Sandberg, chairman of the Geology Department at that time, took a chance and offered Harry an assistantship even though he did not have a geology degree. Harry has never left Louisiana or LSU. He earned both M.S. and Ph.D. degrees from the department of Geology and was hired by Coastal Studies Institute (CSI) as an instructor before he

graduated. Harry, like other researchers at CSI, was supported by an institutional grant to the Institute by Geography programs at the Office of Naval Research. During those initial years at CSI Harry conducted research on carbonate depositional environments following a dissertation on the carbonate sediments of North Sound, Grand Cayman Island directed by Dr. Clyde Moore, Jr. Along with colleagues at CSI he continued to work on carbonate depositional settings with a focus on the physical processes and their impacts on sediment transport and reef development. This research and the need for ONR to know more about coasts dominated by carbonates took Harry and his CSI colleagues to many foreign field project sites throughout the Caribbean and Middle East.

Part of the attraction in coming to LSU was the legacy of excellent research on modern sediments, especially associated with river deltas, by Richard Russell, H.N. Fisk, Rufus LeBlanc, Jim Morgan, Frank Welder, and a group of graduate students that included James Coleman, Sherwood Gagliano, Gill Smith, Roger Saucier, and others who have since made outstanding contributions in fluvial and deltaic research. Even while focusing on carbonates, Harry started working on the Mississippi River Delta and the newly developing Atchafalaya-Wax Lake deltas. Since the early 1980s most of his

research time has been spent studying terrigenous clastic depositional environments of the Gulf of Mexico as well as foreign areas. Although there is constant background research effort on the Mississippi River delta and the new delta lobe represented by the Atchafalaya-Wax Lake deltas, most of Harry's recent research in the Gulf has been focused on the continental slope. His interests are in depositional processes and surficial geology of the slope as interpreted from high resolution acoustic data, 3D-seismic surface amplitude maps, cores, and direct observations/sampling from submersibles. Of particular interest over the past few years has been the important impacts of vented hydrocarbons, formation waters, and sediment on both the geology and biology of the slope's deep water environments.

His latest foreign research has been completed. This work is a comprehensive appraisal of the offshore Mahakam Delta of East Kalimantan, Indonesia. The study involved acquisition of an extensive high resolution seismic and side-scan sonar data set calibrated with bottom samples and cores. Results of this investigation are currently being prepared for publication. Graduate students and other faculty members at LSU participated in this diverse field project.

Finally, research work is only part of Harry's activity at LSU. He teaches, advises graduate students, and has recently stepped down from a six year period as director of Coastal Studies Institute. He has been honored by both LSU and professional societies for his contributions to both education and research.

First place (tie) awarded to:

Hank DeWitt, Mike Globe, and Ray Sorenson

**For: Predicting Permeability with NMR Imaging in the Edwards
Limestone/Stuart City Trend, Texas**

Second place awarded to:

Ali M. Al-Ghamdi and Joel S. Watkins

**For: Structural Styles and Depositional History of North and South
Padre Island OCS Areas, Offshore South Texas**

Third place awarded to:

Hughbert A. Collier and Jorge O. Parra

**For: Petrophysical Properties and Geology of Selected Intevals in the
Frio Formation, Stratton Field, South Texas for Modeling Interwell
Seismic Logging Responses**

Past Recipients Best Paper Awards and A. I. Levorsen Memorial Awards Gulf Coast Association of Geological Societies

	First Award	Second Award	Third Award	A. I. Levorsen Award*
1959	J. E. Walters	R. L. Oakes	H. A. Bernard C. F. Major, Jr. B. S. Parrott	
1960	D. J. Hughes [†]	D. I. Andrews [†]	E. H. Rainwater [†]	
1961	R. D. Ocamb J. C. StipeK.	D. I. Andrews R. Scott W. E. Hayes	R. P. Fietz	
1962	D. R. Tucker R. C. Wilshusen	R. J. Granberry W. R. Walton (tie) [‡]	G. C. Glaser (tie) [‡]	
1963	E. H. Rainwater	V. Peppard	S. L. Blanton, Jr.	
1964	E. H. Rainwater B. F. Dyer	D. R. Boyd	J. L. Arps	
1965	C. R. Kolb J. R. van Lopik	G. R. Kellough	Not awarded	
1966	B. J. Sloan, Jr.	W. R. Paine	R. E. Gernant R. V. Kesling	B. J. Sloan, Jr.
1967	H. Yarborough, Jr.	W. A. Price	J. Ewing (tie) J. C. Meyers (tie)	H. Yarborough, Jr.
1968	J. D. Myers	E. H. Rainwater	D. J. Hughes	J. D. Myers
1969	P. O. Roehl	J. K. Rogers	D. F. McNamee (tie) L. F. Brown (tie)	J. K. Rogers
1970	J. J. Amoruso	R. R. Berg	J. F. Harris	J. J. Amoruso
1971	H. Yarborough, Jr.	D. A. Reel (tie) G. M. Griffin B. J. Sloan (tie) J. A. Hartman (tie)	Not awarded	H. Yarborough, Jr.
1972	R. R. Berg	M. T. Halbouty	J. J. Amoruso	R. R. Berg
1973	R. D. Woods J. W. Addington	R. D. Ottman P. L. Keyes M. A. Ziegler	R. R. Berg F. L. Findley	J. M. Coleman L. D. Wright

	First Award	Second Award	Third Award	A. I. Levorsen Award*
1974	D. H. Kupfer	J. M. Coleman L. D. Wright J. N. Schyda T. Whelan	C. A. Parker	D. H. Kupfer
1975	W. L. Seal J. A. Gilreath	J. D. Myers	B. P. Baganz J. C. Horne J. C. Ferm	J. D. Myers
1976	J. D. Robinson A. R. Troell	J. W. Becher C. H. Moore A. R. Troell	N. Neel	J. D. Robinson
1977	D. K. Davies W. R. Almon	J. O. Lewis	J. O. Snowden W. B. Simmons E. B. Troughber R. W. Stephens	D. K. Davies W. R. Almon
1978	C. T. Siemers	J. W. Lund J. S. King R. E. Berlitz J. A. Gilreath	E. F. McBride	C. T. Siemers
1979	C. D. Winker	R. R. Berg	C. C. Christina K. G. Martin	R. R. Berg
1980	E. A. Mancini D. J. Benson	F. W. Harrison, Jr.	G. N. Gatenby	E. A. Mancini D. J. Benson
1981	E. C. Roy, Jr. M. Eidelbach N. Trumbly N. Trumbly	J. L. Coleman, Jr. C. J. Coleman	G. J. Grabowski, Jr.	E. C. Roy, Jr. M. Eidelbach
1982	T. E. Ewing S. C. Caran	D. J. Benson E. A. Mancini	R. R. Berg M. F. Habeck	T. E. Ewing S. C. Caran
1983	J. W. Cagle M. A. Khan	W. M. Ahr H. B. Hull, Jr.	T. E. Ewing (tie) C. H. Moore (tie)	J. W. Cagle M. A. Khan
1984	G. Kinsland	S. K. Stewart	C. L. Sartor S. R. Howard	G. Kinsland
1985	C. C. Walters M. R. Cassa	E. A. Mancini R. M. Mink B. L. Bearden	A. L. Workman J. S. Hanor	W. E. Galloway
1986	S. P. Dutton	A. H. Saller B. R. Moore	J. M. Coleman D. P. Prior H. H. Roberts	S. P. Dutton
1987	S. P. Dutton R. Finley K. Herrington	R. Evans	C. Black R. Berg	S. P. Dutton R. Finley K. Herrington
1988	M. P. Prescott	J. J. O'Brien I. Lerche	D. F. Williams I. Lerche	J. J. O'Brien I. Lerche

	First Award	Second Award	Third Award	A. I. Levorsen Award*
1989	Peter Hutchinson	N. M. Kuich	William Wade Jeffery Hanor Roger Sassen	Peter Hutchinson
1990	Michael P. Prescott	Philip L. Cook, Jr. John D. Bush John C. Marble Robert D. Schneeflock	Daniel Tearpock Harvey Pousson	Michael P. Prescott
1991	Andrew J. Davidoff	H. S. Sumner	Tom Ewing Grant Ferguson	Andrew J. Davidoff
1992	K. T. Barrow George B. Asquith Gary L. Causey	Raymond A. Levey Mark A. Sippel Robert J. Finley Richard R. Langford	J. Ulises Ricoy Joseph S. Yeh R. P. Major	Harry H. Roberts Douglas J. Cook Mark K. Sheedlo
1993	Wayne Carew Paul F. Ostendorf Glenn L. Krum	William A. Ambrose Raymond A. Levey Jose M. Vidal Mark A. Sippel James R. Ballard David M. Coover, Jr. Walter E. Bloxsom	William D. DeMis Jeffrey V. Milliken	Wayne Carew Paul F. Ostendorf Glenn L. Krum
1994	John A. Rhodes	Barry E. Bradshaw Joel S. Watkins	Roger J. Barnaby R. Ramamoorthy Mark H. Holtz	John A. Rhodes
1995	Robbie R. Zenero David L. Seng Mark R. Byrnes Randolph A. McBride	Ezat Heydari William J. Wade Laurie C. Anderson	Arnold H. Bouma Henry deV. Wickens James M. Coleman	Mary J. Broussard Brian E. Lock
1996	J. C. Fiduk B. D. Trudgill M. G. Rowan P. Weimer P. E. Gale B. E. Korn R. L. Phair W. T. Gafford G. R. Roberts S. W. Dobbs C. K. Guu	C. Story	D. J. Hall	D. J. Hall

* This award is given by the AAPG to the paper that best exemplifies creative ideas in oil and gas exploration (first award, 1966).

† 1985 through 1990 Transactions erroneously shown as not awarded.

‡ Glaser and Walton received First Place in the Paleontology Division for their 1962 paper.

1996 Best Published Paper Awards

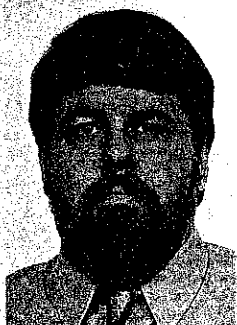
Gulf Coast Section SEPM

First Place awarded to:

Sylvester Q. Breard, Arden D. Callender, Jr.,

and Michael J. Nault

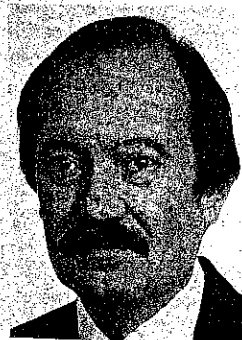
For: Local Foraminiferal Faunas: the Key to Enhanced Stratigraphic Resolution of Expanded Cenozoic Sections of the Gulf Basin



Sylvester Q. "Skip" Breard is a consulting paleontologist in Houston, Texas. A native of Monroe, Louisiana, he earned his B.S. (Geology) and M.S. (Geology) degrees from Northeast Louisiana University (Monroe) in 1975 and 1978. Skip began his professional career as a micropaleontologist with Amoco Production Co., New Orleans, Louisiana in 1979. During his Amoco tenure, he rose to the position of Senior Paleontologist (1982) and Staff Paleontologist (1985). In 1989, he moved to Houston to join British Petroleum Exploration as a senior biostratigrapher. Breard began the transition from oil company to consulting in 1992 when he joined PCI of Houston. In 1993, he joined his coauthors in founding

Applied Biostratigraphix (Houston, Texas).

Breard is an active member of SEPM, Gulf Coast Section SEPM, the Houston Geological Society, Cushman Foundation, Paleontological Research Institute and the Tertiary Research Group. He has served the GCSSEPM as Treasurer (1986-1987) and as Judging and Awards Chairman for the 1991 GCAGS Convention in Houston. He is currently (1997) serving a term as Vice President of the GCSSEPM. An active researcher in Gulf Coast paleontology, Breard has published papers on applied foraminiferal biostratigraphy, paleoecology, paleoclimate, and Tertiary marine vertebrate faunas. He has twice (with coauthors) received recognition from the GCSSEPM for Best Published Paper Awards for the GCAGS *Transactions*; 2nd Place (1993) for a study of Miocene through Pleistocene foraminiferal faunas of the Gulf Basin, and 1st Place (1995) for a marine vertebrate study of the Yazoo Clay (Eocene) in northeast Louisiana.



Arden D. "Ardy" Callender, Jr. received his B.S. in 1971 and M.S. in 1977 in geology from Portland State University. He began his career in 1977 with Texaco, Inc. in Houston, Texas, as a paleontologist (1977-1982). From 1982 to 1986 he was employed as a senior biostratigrapher with Sohio Petroleum/Standard Oil Production Company. In 1986 he began working in Houston as a consulting paleontologist with PCI. He joined British Petroleum in 1989, working as a staff biostratigrapher

until 1992. In 1992, he returned to PCI prior to forming, with his coauthors in 1993, a new paleontological consulting firm, Applied Biostratigraphix in Houston, Texas.

Callender is a member of several professional societies including AAPG, Gulf Coast Section SEPM, Houston Geological Society, Paleontological Research Institute, and the Cushman Society. He has served as Poster Session Chairman for the GCSSEPM Foundation Annual Research Conferences in 1987, 1990, and 1993 to present. He, along with his co-authors, was the recipient of the 2nd Place GCSSEPM Best Published Paper Award for the 1993 GCAGS *Transactions* paper titled "Paleoecologic and Biostratigraphic Models for Pleistocene through Miocene Foraminiferal Assemblages of the Gulf Coast Basin".



Michael J. Nault, a native of New Orleans, is founder of the micropaleontologic consulting firm of Applied Biostratigraphix of Houston, Texas. He did his undergraduate and graduate work at Northeast Louisiana University and the University of Southwestern Louisiana, respectively. Mike has worked as a research geologist for the Louisiana Geological Survey, and as a foraminiferal micropaleontologist for Arco Oil & Gas, Tenneco Oil E&P, Chevron, BP Exploration and PCI before forming Applied Biostratigraphix in 1993.

Nault is an active member of the Gulf Coast Section of SEPM, AAPG, SEPM, Houston Geological Society, Baton Rouge Geological Society and the Cushman Foundation for Foraminiferal

Research. He served the GCSSEPM as President in 1992, Vice President in 1983-84 & 1989-90, Acting Vice President in 1994, Judging & Awards Chairman in 1981, 1983-90, and 1992-96. Mike was Associate Editor for GCSSEPM for the 1980 GCAGS *Transactions* and was Vice Chairman for GCSSEPM for the GCAGS Convention in 1991.

Mike also served as National SEPM Best Paper Award Chairman for the 1995 Houston AAPG Convention. He is presently a member of the GCSSEPM Foundation Board of Trustees, GCSSEPM Awards Chairman and will serve as GCSSEPM Vice Chairman for the 1998 GCAGS Convention in Corpus Christi.

At the 1988 GCAGS Convention in New Orleans, Mike received the GCSSEPM Distinguished Service Award. He, along with his present co-authors, received the 2nd Place GCSSEPM Best Published Award in the 1993 GCAGS *Transactions* for their paper titled "Paleoecologic and Biostratigraphic Models for Pleistocene through Miocene Foraminiferal Assemblages of the Gulf Coast Basin".

Second Place awarded to:

Harry H. Roberts

For: Surface Amplitude Data: 3-D Seismic for Interpretation of Sea Floor Geology (Louisiana Slope)



Harry H. Roberts received a BS degree in physics from Marshall University in Huntington, West Virginia. During his junior year he took a geology course to fulfill a science requirement and became so interested in the subject that he took additional classes as a senior. Even though his classmates were taking jobs with NASA, Harry stayed at Marshall after graduation and took all geology courses required for a BS degree. His teacher was Dr. James R. Wall, a new graduate of LSU who did his graduate work under the direction of

Dr. Grover Murray. A visit to LSU during the Christmas vacation of 1963 convinced Harry that Louisiana was going to be a part of his future. Dr. Adolph Sandberg, chairman of the Geology Department at that time, took a chance and offered Harry an assistantship even though he did not have a geology degree. Harry has never left Louisiana or LSU. He earned both MS and PhD degrees from the Department of Geology and was hired by Coastal Studies Institute (CSI) as an instructor before he graduated. Harry like other researchers at CSI was supported by an institutional grant to the Institute by Geography Programs at the Office of Naval Research. During those initial years at CSI Harry conducted research on carbonate depositional environments following a dissertation on the carbonate sediments of North Sound, Grand Cayman Island directed by Dr. Clyde Moore, Jr. Along with colleagues at CSI he continued

to work on carbonate depositional settings with a focus on the physical processes and their impacts on sediment transport and reef development. This research and the need for ONR to know more about coasts dominated by carbonates took Harry and his CSI colleagues to many foreign field projects sites throughout the Caribbean and Middle East.

Part of the attraction in coming to LSU was the legacy of excellent research on modern sediments, especially associated with river deltas, by Richard Russell, H.N. Fisk, Rufus LeBlanc, Jim Morgan, Frank Welder, and a group of graduate students that included James Coleman, Sherwood Gagliano, Gill Smith, Roger Saucier, and others who have since made outstanding contributions in fluvial and deltaic research. Even while focusing on carbonates, Harry started working on the Mississippi River Delta and the newly developing Atchafalaya-Wax Lake deltas. Since the early 1980s most of his research time has been spent studying terrigenous elastic depositional environments of the Gulf of Mexico as well as foreign areas. Although there is constant background research effort on the Mississippi River delta and the new delta lobe represented by the Atchafalaya-Wax Lake deltas, most of Harry's recent research in the Gulf has been focused on the continental slope. His interests are in depositional processes and surficial geology of the slope as interpreted from high resolution acoustic data, 3D-seismic surface amplitude maps, cores, and direct observations/sampling from submersibles. Of particular interest over the past few years has been the important impacts of vented hydrocarbons, formation waters, and sediment on both the geology and biology of the slope's deep water environments.

His latest foreign research has just been completed. This work is a comprehensive appraisal of the offshore Mahakam Delta of East Kalimantan, Indonesia. The study involved acquisition of an extensive high resolution seismic and side-scan sonar data set calibrated with bottom samples, and cores. Results of this investigation are currently being prepared for publication. Graduate students and other faculty members at LSU participated in this diverse field project.

Finally, research work is only part of Harry's activity at LSU. He teaches, advises graduate students, and has recently stepped down from a six year period as director of Coastal Studies Institute. He has been honored by both LSU and professional societies for his many contributions to both education and research. Harry is an Honorary Member of the Gulf Coast Section SEPM.

Third Place awarded to:

Paula Hansley

For: The Tuscaloosa Formation Revisited



geology. Since that time she has remained in Colorado working for Marathon Oil Company, the U.S. Geological Survey (20 years), and

Paula Hansley was born in Niagara Falls, New York, but spent most of her childhood in Cincinnati, Ohio. Her interest in minerals began early as she spent most weekends collecting minerals and fossils in limestone quarries of the Midwest with her father. During numerous family trips when her father, a chemist, consulted with companies throughout the country, Paula fell in love with the west. She fulfilled a dream to live in the west by attending the University of Colorado where she earned her B.S. and M.S. degrees in

now acting as co-owner of Petrographic Consultants International, Inc. in Denver. While a geologist at the U.S.G.S., Paula conducted research into the genesis of tabular-type uranium deposits in the Jurassic Morrison Formation of New Mexico, origin of a giant tar-sand accumulation in the Permian White Rim Sandstone in Utah, and related the diagenesis of the Cretaceous Shannon Sandstone (Wyoming) to depositional environment. During her career, she has published over 40 papers primarily concerned with the diagenesis and burial history of elastic rocks.

Paula pursues her intense interest in birds through studies of small owls, breeding bird censuses, and writing a natural history column for the local newspaper. She and her astronomer husband, Gary Emerson, live at their 9,000 ft. mountain home, where they observe wildlife, ski, and have star parties at their private observatory.

Past Recipients Best Paper Awards Gulf Coast Section SEPM

	First Place	Second Place	Third Place
1996	S. Q. Breard A. D. Callender, Jr. M. J. Nault	H. H. Roberts	P. Hansley
1995	S. Q. Breard G. L. Stringer	R. A. McBride M. R. Byrnes	C. C. Smith
1994	M. D. Blum D. M. Price	R. A. Eustice L. S. Land	H. H. Roberts A. Bailey G. J. Kuecher
1993	R. L. Adams	S. Q. Breard A. D. Callender M. J. Nault	E. C. McDade R. Sassen L. M. Wenger G. A. Cole
1992*	E. G. Otvos W. E. Howat	D. W. Harrelson J. A. Saunders	W. T. Tanner
1980	A. W. Cleaves	I. L. Van Heerden H. H. Roberts	T. A. Hansen
1979	L. C. Price J. L. Clayton L. L. Rumen	C. W. Poag R. C. Tresslar	R. E. Casey L. W. Gust R. A. Reynolds D. H. Williams A. Levesley T. Duis J. M. Spaw
1978	A. Thomson	C. W. Poag	J. A. Schiebout
1977	C. D. Winker J. D. Howard	W. C. Isphording V. R. Baker	R. M. Looney
1976	C. J. Stuart C. A. Caughney	R. R. Berg R. R. Powell	C. W. Poag P. C. Valentine
1975	J. L. Wilson M. E. York	K. F. Wantland	W. C. Isphording
1974	G. M. Friedman	W. F. Tanner C. R. Berquist	R. J. Moiola D. Weiser A. B. Spencer
1973	W. F. Tanner	R. J. Moiola A. B. Spencer	P. A. Thayer (tie) W. J. Cleary E. O'Donnell (tie) A. P. Wright
1972	W. F. Tanner	A. E. Weidie J. L. Wolleben E. F. McBride	P. A. Thayer D. A. Textoris
1971	R. W. Maxwell, Jr.	C. W. Poag	E. A. Shimm
1970	W. W. Hay S. W. Wise, Jr. R. D. Stieglitz	J. B. Dunlap, Jr.	W. L. Fisher C. V. Proctor, Jr. W. E. Galloway J. S. Nagle

Past Recipients

Best Paper Awards

Gulf Coast Section SEPM

	Best Published Paper	Excellence of Presentation
1991	Brian E. Lock Catherine E. Bishop	Andrew J. Pulham
1990	George C. Flowers Wayne C. Isphording	Jory A. Pacht
1989	Ron Boyd John Suter Shea Penland	Harry H. Roberts
1988	Ron Boyd Shea Penland	Edward McFarlan, Jr.
1987	Wayne Isphording Dewayne Imsand George Flowers	Rowdy Lemoine (tie) Earle McBride (tie)
1986	Douglas F. Williams Dwight M. Trainor	Robert R. Berg
1985	Paul A. Thayer Harry H. Roberts	Gordon W. Fielder
1984	M. J. Ulrich J. R. Kyle P. E. Price	M. Kontrovitz
1983	E. C. Kusters A. Bailey	D. B. Prior
1982	J. Mazzullo	C. D. Winker
1981†	T. A. Daws A. V. Applegate J. C. Palacas	C. R. Handford

*Before 1981 and since 1992, awards were given for first, second, and third place.

†and Best Poster award to E. A. Mancini.

Officers and Committees

Forty-Seventh Annual Convention—1997

Officers

President
Mark J. Gallagher

Vice President
Robert F. Travis

Secretary
Eric C. Broadbridge

Treasurer
Gary W. Jacobs

General Chairman
John C. "Jack" Langford

GCSSEPM Co-Chairman
Arthur S. Waterman

Vice Chairman - Administrative
George E. Smith III

Vice Chairman - Technical
Edward B. Picou, Jr.

1997 Convention Committee

Advertising

Bret Hampton, Chair
Tom Boronow
Alan Kornacki
Erik Mason
Steve O'Rourke
George Rhoads

Ray Stephens
Matt Totten
Dwight Trainor
Darryl Willis

Editor - GCSSEPM
Barry Kohl, Ph.D.

Alumni Functions

Randy Smith

Employment

Jeanne F. Phelps, Chair
Bradley Broekstra
David Phelps
Scott Wainwright

Arrangements

Jim Zotkiewicz, Chair
Doug Bowling
Norma Ivy O'Donnell

Entertainment

Fred Palumbo, Chair
Irion Bordelon, Jr.
Doug Cristina
Al DuVernay
Jim Evans

Audio-Visual

Ronnie Youngblood, Chair
Jeff Henderson
Bob Moore
Brad Smith

Exhibits

Bill Moody, Jr., Chair
Nikki Anderson
Dennis Lanigan

Editor - GCAGS

William Craig, Ph.D.
Randy Altobelli
Claude Baker
Richard Boebel
Bob Branson
Bill Busch
Dick Edmund
Duncan Goldthwaite
Kevin Guilbeau
Mark Hanan
Kathleen Johnson
Allen Lowrie
Terry Pavlis
Janina Rafalska
Bob Sabaté
A.K.M. Sarwar
Laura Serpa
Shelby Smith

Exhibits Manager

Bruce Lemmon (AAPG)

Field Trips

Bryan Stephens, Chair
Dick Fillon
Mark Gallagher

Housing

Mike Fein

Judging & Awards

GCAGS
Bill Furlong, Chair
Frank Schaffer

Judging & Awards

GCSSEPM
Mike Nault

Posters

David Reiter, Chair
Michael Ledet
Robert Shoup

Printing

Glen Shelton, Chair
Duncan Goldthwaite
Ed Picou, Jr.

Program

"Bob" Douglass, Chair
Mike Center
Dale Easley
Mike Fogarty
Mike Gallagher
Bob Ingram
John Lopez
Cheryl Lukehart
Brian O'Neill
Ed Picou, Jr.
David Reiter
Mike Roberts
Bob Sylvester
Mike Styzen

GCAGS Program

Mike Roberts, Chair

GCSSEPM Program

Mike Styzen, Chair

Publicity

Phil Beron, Jr.

Reception

Sue Waters

Registration

Neil Wilson, Chair
Sylvia Cureau
George Smith III
Jim Swartz
Roy Walther

Short Courses

Cheryl Lukehart, Chair
Wendell Olivier

Spouse/Guest Activities

Mary Walther, Chair
Diane Gallagher, Co-chair
Stephanie Emmerling,
Co-chair
Carol Andrews
Judy Lemarié
Peggy Rogers
Betty Youngblood

Support

Carlo Christina

Tobin Theater

David Balcer, Chair
Jim Flis

Transportation

Irion Bordelon, Jr., Chair
Fred Palumbo

Administrative Support

Betty Furlong
Annette Hudson
Carol St. Germain

Board of Directors

Gulf Coast Association of Geological Societies

1996–1997

President	Mark J. Gallagher
Vice President	Robert F. Travis
Secretary	Eric C. Broadbridge
Treasurer	Gary W. Jacobs
Past President	E. Gerald Rolf
Finance Committee Chairman	Howard W. Kiatta

Representatives from Member Societies

Alabama Geological Society	Charles Smith
Austin Geological Society	Mary Ambrose
Baton Rouge Geological Society	Bill Schramm
Corpus Christi Geological Society	Gloria Sprague
East Texas Geological Society	Carl Gray
Houston Geological Society	Jim Ragsdale
Lafayette Geological Society	Ben Sydboten, Jr.
Mississippi Geological Society	Jack S. Moody
New Orleans Geological Society	Alfred H. Baker, Jr.
Shreveport Geological Society	Ralph Richardson
South Texas Geological Society	David M. Oden
Southeastern Geological Society	Ann Tihansky

Officers of Member Societies

Gulf Coast Association of Geological Societies

July 1997

Alabama Geological Society, P.O. Box 6184, University, Alabama 35486

President	Charles Smith
Vice President	T. E. Brunner
Secretary	T. Markham Puckett
Treasurer	Lewis Dean

Austin Geological Society, P.O. Box 1302, Austin, Texas 78767

President	Patricia Bobeck
President Elect	Eddie Collins
Vice President	Robert Blodgett
Secretary	Tim Walter
Treasurer	Mary Talley

Baton Rouge Geological Society, Inc., P.O. Box 19151, Baton Rouge, Louisiana 70893

President	M. Amparo de las Heras-Kennedy
Vice President/President Elect	Barry J. Hebert
Secretary	Steven E. Whitting
Treasurer	Rodney W. Jackson

Corpus Christi Geological Society, P.O. Box 1068, Corpus Christi, Texas 78403

President	Thomas V. Dubois
President Elect	Charles Franck
Vice President	Scott Wruck
Secretary	John Carnes
Treasurer	Matthew Franey

East Texas Geological Society, P.O. Box 216, Tyler, Texas 75710

President	Richard A. Swindell
Vice President	David Crass
Secretary-Treasurer	To Be Announced

Houston Geological Society, 7457 Harwin, Suite 301, Houston, Texas 77036

President	Jeff Lund
President Elect	Sandi Barber
Vice President	Charles Sternbach
Secretary	Daniel Bonnet
Treasurer	Deborah Sacey

Lafayette Geological Society, P.O. Box 51896, Lafayette, Louisiana 70505

President	William Terrell
First Vice President	Jim Gamble
Second Vice President	Terry Bailey
Secretary	Michelle Pittenger
Treasurer	Robert Brekke

Mississippi Geological Society, P.O. Box 422, Jackson, Mississippi 39205

President George B. Vockroth
 First Vice President Rick Ericksen
 Second Vice President David L. Chastain
 Secretary Roger N. Townsend
 Treasurer Stephen D. Champlin

New Orleans Geological Society, Inc., Suite 932, 234 Loyola Avenue, New Orleans, Louisiana 70112

President Alfred H. Baker, Jr.
 President Elect Willis E. Conatser
 Vice President Eugene R. Brumbaugh
 Secretary Michael M. Ledet
 Treasurer Brenda E. Reilly

Shreveport Geological Society, P.O. Box 750, Shreveport, Louisiana 71162

President Mark E. Dunham
 First Vice President Joe R. White, Jr.
 Second Vice President Robert E. Sharp
 Secretary Jeffrey W. Fulco
 Treasurer Craig C. Barclay

South Texas Geological Society, D-100 Petroleum Center, San Antonio, Texas 78209

President Douglas N. Toepperwein
 President Elect Debbie Dorsett
 Vice President John R. Waugh
 Secretary Michelle Debus
 Treasurer Michelle Lee

Southeastern Geological Society, P.O. Box 1634, Tallahassee, Florida 32302

President Ann Tihansky
 Vice President Wink Winkler
 Secretary/Treasurer Gary Maddox

1997 Executive Council

Gulf Coast Section SEPM

Officers

President

Paul Weimer
Department of Geological Sciences
Energy and Minerals Applied Res. Ctr.
Campus Box 250
University of Colorado
Boulder, CO 80309
(303) 492-3809; Fax (303) 492-2606

President-Elect

James O. Jones
Department of Geology
The Univ. of Texas at San Antonio
San Antonio, TX 78249
(210) 691-4455; Fax (210) 691-4469

Vice President

Sylvester Q. Breard, Jr.
Applied Biostratigraphix
13735 Overlook Lane
Houston, TX 77077
(713) 496-5336

Secretary

R. P. "Rick" Major
The Univ. of Texas at Austin
Bureau of Economic Geology
Austin, TX 78713
(512) 471-4331; Fax (512) 471-0140

Treasurer

Michael J. Styzen
Shell Offshore, Inc.
P. O. Box 61933
New Orleans, LA 70161
(504) 588-4308

Past President

Rashel N. Rosen
Excalibur Interpretation Co.
333 Clay St., Suite 3900
Houston, TX 77002
(713) 754-6789; Fax (713) 739-7130

Foundation

Trustees

Denise M. Butler-Ford
Pennzoil Exploration & Prod. Co.
700 Milam
P.O. Box 2967
Houston, TX 77252
(713) 546-6357

Sheila C. Barnette
BP Exploration, Inc.
P.O. Box 4587
Houston, TX 77210
(713) 560-3820

Michael J. Nault
Applied Biostratigraphix
717 E. 8th Street
Houston, TX 77007
(713) 868-7444

Executive Director

Bob F. Perkins
165 Pinehurst Road
West Hartland, CT 06091
(203) 738-9302; Fax (860) 738-3542

Standing Committees

Gulf Coast Association of Geological Societies

July 1997

AAPG Advisory

Peter G. Gray

Awards and Nominations

James O. Jones, Chairman

E. Gerald Rolf

William E. Marsalis

William L. Fisher

Robert L. Williamson

Convention

Daniel Smith, Chairman

Howard Kiatta

Birdena Schroeder

O. Roger Berg

B. Ross White

Pete Rose

Carolyn Condon

Dave Pope

Rodney Jackson

Thomas E. Ewing

Bill Layton

Finance

Howard W. Kiatta, Chairman

Don R. Boyd

Gerald A. Cooley

Steve Hill

Marvin L. Smith

Financial Aid to Students

James A. Hartman, Chairman

M. R. "Bob" Douglass

Robert W. Sabaté

Historian

David E. Pope

Long-Range Planning

John J. Amoruso, Chairman

E. Gerald Rolf

William E. Marsalis

William L. Fisher

Robert L. Williamson

Publications

Robert E. Boyer, Chairman

David B. Bieler

Edward C. Roy, Jr.

William C. Ward

E. G. (Jerry) Wermund

1996 Financial Aid to Students

Gulf Coast Association of Geological Societies

During 1996 the GCAGS received eighteen applications for financial assistance from students enrolled in graduate and undergraduate geology programs in ten Gulf Coast colleges and universities. Grants totaling \$10,000 were awarded to ten successful applicants.

The Financial Aid Committee, Ralph G. Richardson (chairman), Brian E. Lock and Lee McRae made awards to the following students:

Daniel J. Bafia
Dorothy F. Ballentine
Tavia L. Bicklein
Rion H. Camerlo
Toby J. Dogwiler
Robert A. Drake
Qing Fang
Mark A. Hanan
Amanda M. Nikiel
Jennifer A. Roberts
Daniel J. Rozman
Giovanni Sella
James C. Slone
Georgios P. Tsouflas
H. A. R. Wood
Christopher Zahm

Texas A & M University
Louisiana State University
Louisiana State University
University of Texas at Austin
Mississippi State
Auburn University
University of Texas at Austin
University of New Orleans
Louisiana State University
University of Texas at Austin
Louisiana State University
Louisiana State University
Auburn University
University of Texas at Austin
Auburn University
University of Texas at Austin

Past Officers and Convention Chairmen

Gulf Coast Association of Geological Societies

	Host City	President	Vice-President	Secretary	Treasurer	Chairman
1951	New Orleans	L. Bowling	T. H. Philpott		E. M. Baysinger	
1952	Corpus Christi	W. M. Chaddick, Jr.	W. A. Gorman		T. D. Barber	
1953	Shreveport	R. T. Wade	D. D. Utterback	J. S. Spencer	K. Carter	W. J. Nugent
1954	Houston	W. R. Canada	W. H. Knight	W. A. Peterson	E. W. Kimball	
1955	Biloxi	A. E. Blanton	L. D. Traupe	F. H. Webster	C. C. Barber	R. D. Sprague
1956	San Antonio	R. L. Layden	M. W. Beckman	C. W. Holcomb	A. F. Scott	G. J. Joyce
1957	New Orleans	H. N. Hickey	P. Montgomery	R. A. Davis	K. C. Anderson	T. H. Philpott
1958	Corpus Christi	E. A. Lohse	R. W. Grayson	E. T. Musselman	W. H. Wallace, Jr.	R. C. Philshusen
1959	Houston	G. C. Hardin, Jr.	L. Harvey	J. F. Moss	J. A. Wheeler	O. G. Bell
1960	Biloxi	M. F. Kirby	D. N. Osburn	W. W. Woolfolk	E. G. Jeffreys	A. E. Blanton
1961	San Antonio	D. Dassow	E. P. Roth	A. W. Wood	E. L. Ames	L. L. Palmer
1962	New Orleans	T. H. Philpott	J. C. Byrd	H. O. Woodbury	K. Soule	L. H. Meltzer
1963	Shreveport	J. C. Byrd	E. Knott	W. E. Bancroft	R. E. Rogers	H. J. Tyler
1964	Corpus Christi	K. Knott	R. E. Fairchild	R. W. Luker	D. A. Pedrotti	B. F. Dyer
1965	Houston	R. E. Fairchild	A. M. Borland	K. C. Harkins, Jr.	J. L. George, Jr.	E. A. Lohse
1966	Lafayette	A. M. Borland	J. H. Hensley	W. A. Robbins, Jr.	J. S. Schoelen	R. R. Copeland
1967	San Antonio	W. L. Stapp	M. D. Horton	M. L. Frazier, Sr.	L. C. Bryant	M. O. Turner
1968	Jackson	M. D. Horton	R. O. Vernon	L. G. Hughes	E. D. Minihan	L. E. Warren
1969	Miami	R. O. Vernon	H. J. Tyler	J. W. Yon, Jr.	C. W. Hendry, Jr.	H. S. Puri
1970	Shreveport	H. J. Tyler	L. H. Meltzer	C. E. Brown	B. C. Tucker	J. O. Goffe
1971	New Orleans	L. H. Meltzer	D. R. Boyd	M. L. Dwight	P. G. Gray	R. G. Williamson
1972	Corpus Christi	D. R. Boyd	F. M. Schall, Jr.	M. H. Oakes	J. E. Melton	J. M. Sides
1973	Houston	F. M. Schall, Jr.	S. J. Lysinger	M. E. Hole, Jr.	P. W. Cauthon, Jr.	C. E. Harrison
1974	Lafayette	S. J. Lysinger	W. H. Moore	T. J. Eby, Jr.	J. L. Bellamy	F. W. Harrison, Jr.
1975	Jackson	W. H. Moore	C. L. Sartor	W. E. Taylor	H. L. Ladner	C. H. Williams, Jr.
1976	Shreveport	C. L. Sartor	R. E. Boyer	J. T. Palmer	C. E. Brown	L. E. Jordan
1977	Austin	R. E. Boyer	P. G. Gray	A. E. Bell	F. L. Osborne, Jr.	E. G. Wermund, Jr.
1978	New Orleans	R. W. Stephens	E. C. Roy, Jr.	R. M. Swords	C. J. Corona	J. Braunstein
1979	San Antonio	E. C. Roy, Jr.	F. W. Harrison, Jr.	S. L. Perkins	L. C. Bryant	G. His
1980	Lafayette	F. W. Harrison, Jr.	P. M. Strunk	J. W. Shirley	R. A. Anderson	M. A. Munchrath
1981	Corpus Christi	P. M. Strunk	J. J. Amoruso	T. J. Wintermute	W. R. Payne	Wilson Humphrey
1982	Houston	J. J. Amoruso	S. C. Childress	C. G. Beckwith	C. A. Baird	J. O. Lewis
1983	Jackson	S. C. Childress	J. P. Palmer	S. A. Horton	P. D. Cate	J. C. Marble
1984	Shreveport	J. T. Palmer	E. G. Wermund	C. S. Cook	E. W. Saye	J. M. Forgotson, Jr.
1985	Austin	E. G. Wermund	D. E. Pope	R. Everett	D. C. Ratcliff	L. E. Garner
1986	Baton Rouge	D. E. Pope	R. H. Sams	B. D. David	F. E. Lindfors-Kearns	H. L. Roland
1987	San Antonio	R. H. Sams	J. A. Hartman	M. T. Tobin	T. Cooper	D. F. Tobin
1988	New Orleans	J. A. Hartman	W. R. Payne	R. W. Sabaté	J. E. Bailey	C. C. Baker
1989	Corpus Christi	W. R. Payne	P. G. Gray	B. E. Gaither	T. B. Henderson	G. M. Heinzelmann
1990	Lafayette	P. G. Gray	C. E. Harrison	H. Fielding	B. Smart	B. E. Lock
1991	Houston	C. E. Harrison	J. C. Marble	H. W. Kiatta	L. D. Bartell	D. L. Smith
						C. Noll
1992	Jackson	J. C. Marble	R. L. Williamson	W. Lester Aultman	Stanley King	S. C. Kniox
1993	Shreveport	R. L. Williamson	W. L. Fisher	Mark Schroeder	B. R. White	O. R. Berg
						J. P. Wanger
1994	Austin	W. L. Fisher	W. E. Marsalis	S. P. Dutton	C. Condon	P. R. Rose
1995	Baton Rouge	W. E. Marsalis	E. Gerald Rolf	S. N. Breakfield	R. W. Jackson	D. E. Pope
1996	San Antonio	E. Gerald Rolf	Mark J. Gallagher	William P. Wilbert	Bill Layton	Thomas E. Ewing
1997	New Orleans	Mark J. Gallagher	Robert F. Travis	Eric C. Broadbridge	Gary W. Jacobs	John C. Langford

Past Officers

Gulf Coast Section of SEPM

	President	Vice-President	Secretary	Treasurer
1953-1954	Stuart A. Levinson	Grover E. Murray	William H. Akers	Frank V. Stevenson
1954-1955	Charles W. Stuckey, Jr.	E. H. Rainwater	William H. Akers	Fred L. Smith, Jr.
1955-1956	E. H. Rainwater	Frank S. Westmoreland	Hugh A. Bernard	Eleanor T. Caldwell
1956-1957	Lloyd M. Pyeatt	J. O. Colle	H. Dillingman, Jr.	Eleanor T. Caldwell
1957-1958	J. O. Colle	Fred L. Smith, Jr.	Harold V. Andersen	William G. Parker
1958-1959	Marcus A. Hanna	Claude M. Quigley	Fred E. Smith	Bernard L. Hill, Jr.
1959-1960	David E. Pope	A. D. Ellis, Jr.	Gordon C. Munsey	H. A. Chun
1960-1961	Claude M. Quigley	Harold V. Andersen	E. Ann Butler	Edward Marks
1961-1962	Harold V. Andersen	Theodore D. Cook	Benjamin J. Petrussek	Albert D. Warren
1962-1963	Albert D. Warren	Ernest H. Horton	Blair S. Parrott	Henry H. Phillips
1963-1964	Lyman D. Toulmin	E. Ann Butler	Charles C. Albers	John E. Kilgore
1964-1965	Howard L. Tipsword	Benjamin J. Petrussek	D. Jeter Smith	Emmett R. Adams
1965-1966	John B. Dunlap, Jr.	John J. W. Rogers	M. Ray Bane	Charles B. Morris
1966-1967	Hubert C. Skinner	Richard P. Zingula	Gene Ross Kellough	Gene B. Martin
1967-1968	Benjamin J. Petrussek	Dan McGregor	Garrett Briggs	Herbert A. Elliot, Jr.
1968-1969	William A. Atlee	Edgar B. O'Quinn	James W. Fowler	William E. Steinkraus
1969-1970	Fred L. Smith, Jr.	Kenneth L. Loep	Robert K. Sylvester	C. Wylie Poag, Jr.
1970-1971	Jules Braunstein	Douglas E. Jones	Walter H. Trenchard	Gerald R. Davids
1971-1972	William W. Hay	William E. Steinkraus	Karl J. Koenig	Robert N. Stude
1972-1973	C. Wylie Poag, Jr.	Emmett R. Adams	Gerald R. Stude	Joan B. Strough
1973-1974	Edward B. Picou, Jr.	Walter H. Trenchard	Lawrence C. Menconi	J. Lloyd Tuttle, Jr.
1974-1975	Emmett R. Adams	Clifton A. Couture	Herbert A. Elliott, Jr.	Doris M. Curtis
1975-1976	James L. Lamb	Lawrence C. Menconi	William S. Grubb	John L. Carney
1976-1977	Clifton A. Couture	Eleanor T. Caldwell	Sherwood W. Wise, Jr.	Joseph E. Boudreaux
1977-1978	Gerald R. Stude	William P. S. Ventress	Gary R. Roberson	George C. Esker, III
1978-1979	Willard P. Leutze	Bob F. Perkins	Walter P. Kessinger	Kenneth A. Hodgkinson
1979-1980	Gene B. Martin	John L. Carney	Mary Ann Raffle	Arthur S. Waterman
1980-1981	Bob F. Perkins	Don G. Bebout	Sheila C. Barnette	Ted Karmen
1981-1982	William P. S. Ventress	Kenneth A. Hodgkinson	Brian J. O'Neill	Kurt Geitzenauer
1982-1983	John L. Carney	Ernest A. Mancini	Susan J. Conger-Morris	Kevin C. Kilmartin
1983-1984	Don G. Bebout	Michael J. Nault	Susan J. Conger-Morris	Nelson B. Yoder
1984-1985	Ernest A. Mancini	J. M. Crosbie	John G. McPherson	John B. Anderson
1985-1986	Susan J. Conger Morris	Arthur S. Waterman	John G. McPherson	Richard E. Constans
1986-1987	Charles L. McNulty	Denise M. Butler	Kurt G. Geitzenauer	Sylvester Q. Breard, Jr.
1987-1988	Arthur S. Waterman	Brian J. O'Neill	Ramil C. Wright	Charles G. Rosato
1988-1989	Samuel P. Miano	Charles C. Smith	Richard H. Fillon	Bethanne Breisacher
1989-1990	Sheila C. Barnette	Michael J. Nault	Nancy Engelhardt-Moore	Michael W. Center
1990-1991	Denise M. Butler	Charles C. Smith	Nancy Engelhardt-Moore	Kurt Geitzenauer
1992	Michael J. Nault	Brian E. Lock	Mary (Missy) Jackson	Elaine H. Collison
1993	John M. Armentrout	David W. Ford	Mary (Missy) Jackson	Elaine H. Collison
1994	Nancy Engelhardt-Moore	Mary (Missy) Jackson	Michael J. Styzen	Elaine H. Collison
1995	Charles C. Smith	William C. Ward	Michael J. Styzen	Richard J. White
1996	Rashef N. Rosen	James O. Jones	R. P. Major	Richard J. White
1997	Paul Weimer	Slyvester Q. Breard	R. P. Major	Michael J. Syzen

Bylaws

Gulf Coast Association of Geological Societies, Inc.

Part A: Organization

ARTICLE I—Name

This is a non-profit organization and shall be known as the "Gulf Coast Association of Geological Societies, Inc." It is hereinafter referred to as "This Association."

ARTICLE II—Object

The object of This Association is to provide for discussion and publication of papers on subjects and problems coming within the scope of the Geological profession and with particular emphasis on Gulf Coast geology.

ARTICLE III—Organization

This Association is an organization of AAPG-affiliated Geological Societies in the Gulf Coast area.

Section 1.

The business of This Association shall be transacted by a Board of Directors composed of one representative from each member society and the President, Vice-President, Secretary, Treasurer, and Past President. The Vice-President, Secretary, and Treasurer shall be elected by the Board of Directors at the annual meeting. At the request of the Vice-President's society, however, the Secretary and Treasurer may be elected at a prior Board meeting but they will not take office until after the annual meeting. The Secretary and Treasurer shall be non-voting members of the Board of Directors. The Secretary and Treasurer shall be nominated by the Executive Committee of the local Geological Society next in line to host the annual meeting. The Vice-President shall be nominated by the Executive Committee of the host society for the annual meeting two years hence and shall accede to the Presidency. Thus each year the President, Secretary and Treasurer will be from the host society with the Vice-President providing continuity with the Board of Directors as he assumes the Presidency in the ensuing year. The duties of these officers shall be those customary to their respective offices.

The GCAGS representative to the Advisory Council of American Association of Petroleum Geologists shall be selected by the Board of Directors of GCAGS and shall be an ex-officio, non-voting member of the GCAGS Board of Directors.

Each member society shall designate a representative to the Board of Directors and in the event the chosen representative cannot attend any given Board of Directors meeting, an alternate representative shall be appointed by the member society to attend and vote in the absence of the representative. The representative, when practicable, shall be an officer or past officer of the society he represents.

Each society shall have one vote on actions taken by the Board of Directors with the exception that the host society, the next annual host society and the immediate past host society will be entitled to two votes by virtue of their members holding the offices of President, Vice-President and Past President.

The officers of the Board of Directors shall be elected for a term of one year. They shall be elected and assume their duties as soon after the annual meeting of This Association as is practicable, except as noted in Paragraph 1 with regard to the Secretary and Treasurer. Any

vacancies shall be filled by the Board of Directors as provided above in Paragraph 1.

Section 2.

The business of This Association shall be conducted by the Board of Directors. A simple majority vote of the members present at meetings is required to effect decisions, except in those matters which require a greater majority, as set forth in these Bylaws.

A quorum shall consist of more than one-half of the voting members of the Board of Directors.

The Executive Committee composed of the President, Vice-President, Secretary, Treasurer, Past President, and Finance Committee Chairman shall have the authority to transact business of an emergency nature between meetings. Any business so transacted shall be subject to ratification by the Board of Directors at its next regularly scheduled meeting. A quorum of the Executive Committee shall be three members.

ARTICLE IV—Meetings

There shall be an annual meeting of This Association, the time and place of which shall be determined by the Board of Directors. Additional meetings may be called at the discretion of the Board of Directors.

ARTICLE V—Publications

There shall be an annual *Transactions* published by This Association, which shall contain papers presented at the annual meeting, and such other material as selected by the Board of Directors. The Board of Directors is authorized to have published additional bulletins, and other material which they feel will further the object of This Association.

ARTICLE VI—Funds

The funds of This Association shall be deposited in any federally insured bank or savings and loan association or in any fully insured account of a major securities firm selected by the Finance Committee, to the credit of this Association, or invested in U.S. Government Bonds at the discretion of the Finance Committee.

ARTICLE VII—Amendments

Amendments to this Part A and to the Articles of Incorporation may be proposed by the Board of Directors, or by any two member societies. Proposed amendments shall be submitted to each of the member societies in writing. It shall require an affirmative vote of three-fourths of the member societies to ratify such an amendment.

ARTICLE VIII—Later Affiliation

Non-member Geological Societies in the Gulf Coast Area which are affiliated with AAPG may petition the Board of Directors for membership and shall be accepted by an affirmative vote of three-fourths of the Board of Directors.

ARTICLE IX—Resignation

Any member society may resign from This Association at any time by written notice to the Board of Directors. There shall be no oblig-

ation to transfer to such resigning society any portion of This Association's funds.

ARTICLE X—Dissolution

This Association shall terminate at such time as a majority of the member societies shall so vote. Upon dissolution all funds and other property shall be divided as mandated by the Articles of Incorporation.

Part B: Committees, Finances

ARTICLE I—Permanent Committees

The President, with the approval of the Board of Directors, shall appoint the Annual Meeting Chairman, and the Publications Committee Chairman, appointments being for one year.

Section 1. Annual Meeting Chairman

The Annual Meeting Chairman shall direct the staging of the annual meeting, and shall have the authority to appoint such additional committees as he deems necessary.

Section 2. Publications

This committee shall be responsible for publishing all publications of This Association except the Transactions which fall under the purview of the Annual Meeting Chairman. Sales and storage of all GCAGS publications, including the Transactions, are the responsibility of this committee. The chairman shall provide annually to the Finance Committee an inventory of the GCAGS publications.

Section 3.

The President, with the approval of the Board of Directors, may appoint such additional committees as are necessary to conduct the business of This Association.

ARTICLE II—Treasurer

The Treasurer shall have the authority to issue checks against the Annual Meeting bank account of This Association on his sole signature, but in the event of his absence or incapacity to act, withdrawals or payments by checks may be made on the signature of the President during the continuance of the absence, or incapacity, of the Treasurer. In this event, the identity and authority of the President, and the circumstances relating to the absence or incapacity of the Treasurer shall be certified by the Board of Directors, if so required by the depository. The Treasurer shall submit a financial report on the Annual Meeting at each meeting of the Board of Directors and shall keep a set of books in accordance with good accounting practices. He shall submit the books of the Annual Meeting to the Finance Committee by March 1st following the Annual Meeting.

The office of Treasurer shall be bonded as directed by the Board of Directors.

ARTICLE III—Finance Committee

The Finance Committee shall be responsible for investing and managing the funds of This Association. They shall be responsible for advancing to the Treasurer the necessary funds for operating the Annual Meeting and shall disburse funds for expenses and projects not related to the Annual Meeting as directed by the President upon approval by the Board of Directors. The Committee shall have authority to invest the funds as outlined in Article VI of Part A hereof. They shall prepare a financial report on the Association's funds and submit it at each meeting of the Board of Directors. They shall also keep an inventory of publications and equipment owned by the Association. They will keep a set of books in accordance with good accounting practices and will submit the books for auditing as requested by the Board of Directors. The Committee will oversee the preparation and submittal of the Association's Annual Income Tax Return. The Committee will also keep a file of these financial reports, as well as the report of the Treasurer for each Annual Meeting, for access by officers and representatives of the annual meetings for future years. The Committee shall consist of five members serving staggered three-year terms, such that each year one to three members will complete their terms and one to three new members will be appointed. The President of the Association, with the approval of the Board of Directors, shall appoint the members of the Finance Committee and select its chairman. Members of the Finance Committee shall be bonded as directed by the Board of Directors. All checks of greater than \$1,000 shall be signed by two of the Finance Committee members.

ARTICLE IV—Amendments

This Part B may be amended by an affirmative vote of three-fourths of the Board of Directors.

ARTICLE V—Dues

There shall be no dues.

Bylaws

Gulf Coast Section

Society of Economic Paleontologists and Mineralogists

ARTICLE 1—Object

1.01 The object of the Gulf Coast Section of the Society of Economic Paleontologists and Mineralogists is to promote the science of stratigraphy in the Gulf Coast states through research in paleontology and sedimentary petrology, especially as it relates to petroleum geology. The Corporation, herein referred to as the "Section," will be closely associated with the Gulf Coast Association of Geological Societies and will cooperate with it and with the local geological societies of which it is composed for the furtherance of mutual objectives.

ARTICLE 2—MEMBERS

2.01 The Section shall have members, charter members, and honorary members.

2.02 Members shall be persons engaged in paleontologic, petrographic or stratigraphic studies that have application to the geology of petroleum and who work or reside in the Gulf Coast province of the states of Texas, Louisiana, Mississippi, Alabama, Georgia, or Florida, or whose interest or work is principally within these states. Membership, once obtained, shall not be dependent upon continued residence in the aforementioned states.

2.03 Charter members are those whose applications for membership were received before the first nomination of officers. They shall enjoy all the privileges of members, and, hereinafter, are included in all references to "members."

2.04 The Council may elect as honorary members persons who have contributed distinguished service to the science of stratigraphy, paleontology or sedimentary petrology, especially as they relate to petroleum geology in the Gulf Coast. Honorary members shall not be required to pay dues.

2.05 Each candidate for membership shall submit to the Section an application on a form authorized by the Council for this purpose.

2.06 New members enrolled after December 1 shall be considered as having paid their dues for the next calendar year.

ARTICLE 3—COUNCIL AND OFFICERS

3.01 Executive authority of the Section is vested in a board of directors known as the "Council" consisting of six members who are duly elected by the members, as follows: President, President-Elect, Vice President, Secretary, Treasurer, and the most recently retired Past President.

3.02 The President shall discharge the usual duties of a president, as well as act as presiding officer at all meetings of the Section and Council.

3.03 The Vice President shall assume the duties of the President in the case of the absence or disability of the latter. The Vice President shall also be Chairman of the Membership Committee and as such shall keep a complete up-to-date list of members.

3.04 The Secretary shall keep the records of the proceedings of the

Section and a complete list of the membership. The Secretary shall attend to the preparation and mailing of notices, membership application blanks and other materials necessary to the business of the Section.

3.05 The Treasurer shall have custody of all funds of the Section. The Treasurer shall keep account of the receipts and disbursements, and submit an accounting to the membership at the end of each year.

3.06 The Council shall have control and management of the affairs and funds of the Section.

3.07 The President and Vice President shall not serve for more than one (1) year, except that if the Vice President succeeds to the position of Acting President, the Acting President may be elected to a full term as President.

3.08 - In the event that neither the President nor Vice President is available to serve as presiding officer of the Section, the immediate Past President shall assume the President's duties.

3.09 The President-Elect shall serve for one (1) year as such, and in the following year the President-Elect shall assume the office of President. The President-Elect shall have not administrative authority except as a member of the Council. The President Elect shall acquaint himself with all the details of the office of President and generally prepare himself to serve as President. The President Elect shall be responsible for the preparation of the annual meeting for the ensuing year.

3.10 A vacancy occurring in the offices of Vice President, Secretary or Treasurer shall be filled by Council appointment.

3.11 A vacancy occurring in the office of President-Elect shall be filled by mail ballot by the membership through a special election called by the Council.

3.12 The Secretary and Treasurer shall serve for a term of two (2) years. These offices shall be renewable through election.

ARTICLE 4. - MEETINGS OF MEMBERS

4.01 The Section shall hold at least one stated meeting each year, which shall be known as the Annual Meeting. This meeting will usually be held in conjunction with the Annual Meeting of the Gulf Coast Association of Geological Societies.

4.02 The program for the Annual Meeting shall be arranged by the Section Program Chairman in cooperation with the Gulf Coast Association of Geological Societies (GCAGS) designated Program Chairman. All Section concerns regarding the Annual Meeting shall be coordinated by the Section designated GCSSEPM Vice-Chairman. The Section designated GCSSEPM Editor shall coordinate with the GCAGS Editor on the editing and publication of the Annual Meeting proceedings known as the GCAGS Transactions. The Section designated Judging and Awards Chairman shall coordinate all Section Awards at the Annual Meeting.

4.03 At the time of the Annual Meeting, a Business Meeting may be held for the transaction of Section business.

ARTICLE 5—AMENDMENT OF BYLAWS

5.01 These Bylaws may be amended by two-thirds vote of returned mail ballots received by the Secretary sixty (60) days after proposal of amendments with provision for vote is mailed to the members. Any proposed amendments must have the approval of a majority of the Council before being submitted to the members.

5.02 A petition containing the signatures of twenty (20) active members is considered sufficient to bring before the Council a proposed change in the Bylaws. A majority vote of Council is also considered sufficient to initiate a proposed change.

ARTICLE 6—DUES

6.01 The fiscal year of the Section shall commence on January 1 and end on December 31.

6.02 The annual dues of the members shall be ten dollars (\$10.00).

6.03 A bill for dues shall be mailed by the Vice President, as Chairman of the Membership Committee, to all delinquent members by March 31 of each year. Members who have not paid by June 1 shall be dropped from the membership roles.

6.04 Members dropped for non-payments of dues may be reinstated following their payment of all delinquent dues.

6.05 Members may, at their discretion, pay their annual dues for periods of up to five (5) years at the rate of forty dollars (\$40.00) for the five (5) year period.

ARTICLE 7. - FINANCIAL PROCEDURE

7.01 No officer or member shall enter into contract or disburse any of the Section's funds, without the co-signature of a member of the Council. Disbursal of a sum in excess of Five Hundred Dollars (\$500.00) must be approved by a majority of the Council.

ARTICLE 8. - ELECTIONS

8.01 The President shall appoint two (2) nominating committees, instructing each committee to submit nominations for President-Elect, Vice President, and Secretary or Treasurer. These nominations shall be in the Secretary's hands before April 15. If desired, the same person may be nominated by the two committees for the offices of Secretary and Treasurer, but the nominations for President-Elect and Vice President shall not include the names of the same person on the two slates. The nominations of the first com-

mittee to file its report will have precedence in case of overlapping nominations, and the other committee shall then be requested to change its nominations. A candidate for office must be a member of the Section.

8.02 Ballots containing the nominations for officers, arranged alphabetically under each office, shall be prepared by the Secretary and mailed to each member of the Section on or before July 15. The ballots received by the Secretary before September 15 shall be counted by him. Receipt of a plurality of the votes cast for any office shall constitute election. In case of a tie vote, members of the current Council shall cast one additional deciding vote.

8.03 Results of balloting shall be announced at the Annual Meeting each October and the new officers shall enter upon duty on January 1 of the next calendar year.

ARTICLE 9—BUSINESS REPRESENTATIVES

9.1 The Secretary shall appoint one representative from each group of members in each local geological society affiliated with the Gulf Coast Association of Geological Societies and in other localities as needed. Each representative shall have an up-to-date list of the members residing in the representative's vicinity. The Secretary will notify these members concerning any matter of Section policy which may be relayed to him by the President and shall have the authority to convene a meeting of those members to determine their views concerning Section affairs. The representative will report the results of such meetings to the President of the Section. The representative will cooperate with the Section Editor in the soliciting of papers to be presented at the Annual Meeting and with the Chairman of the Membership Committee in recruiting new members for the Section.

ARTICLE 10—AUDIT

10.01 The President shall appoint an Auditing Committee which shall review the accounts presented by the Treasurer. The approval of the Treasurer's books by the committee shall be required before the final report will be accepted.

The Constitution of the GCSSEPM was originally adopted in 1954 and was amended in 1960, 1962, 1966, 1969, 1971, 1972, 1974, and 1981. The Section was incorporated under the laws of the State of Texas in 1981, and these Bylaws were adopted at that time in place of the original Constitution and its amendments. They were amended in 1984, 1990, 1991 and 1996. These Bylaws embody all of the provisions of the original Constitution and its amendments.